

## SALE OF ANTIQUES, FINE ART, OBJETS D'ART & WORKS OF ART

INCLUDING  
ASIAN AND ORIENTAL  
CERAMICS AND  
WORKS OF ART

THURSDAY  
18TH OCTOBER  
2012



THE PITTVILLE PUMP ROOM  
CHELTENHAM





Lot 370



Lot 206



Lot 558



Lot 496



Incorporating Martin Elliott Partnership

*Fine Art Auctioneers*

**SALE OF ANTIQUES, FINE ART,  
OBJETS D'ART & WORKS OF ART**  
INCLUDING ASIAN AND ORIENTAL CERAMICS  
AND WORKS OF ART

**Thursday, 18th October 2012**

**at 10.00 am precisely**

**To be sold by Auction at**

**THE PITTVILLE PUMP ROOM, Cheltenham, Gloucestershire**

**located in Pittville Park, Cheltenham GL52 3JE**

**Front Cover Illustration: Lot 320**

We are now able to provide live online bidding at [www.the-saleroom.com/taylorandfletcher](http://www.the-saleroom.com/taylorandfletcher)



**How to get there**

**By car**

Cheltenham is located off junctions 10 and 11 of the M5 motorway and on the A40 from London and Oxford. Pittville Pump Room is signposted from all main routes. It is 1½ miles north of the Cheltenham town centre. There are 150 free car parking spaces at the Pump Room.

**By train**

The nearest station is Cheltenham Spa. This is 2½ miles from Pittville Pump Room and taxis are readily available from the station.

**By bus**

National Express coaches serve Cheltenham Bus Station. This is located in the centre of Cheltenham, 1½ miles from Pittville Pump Room. Local bus services operate in and around the town with regular routes passing Pittville Park.



*Enquiries:* Martin L. Lambert and Stephen J. Sheppard

**Catalogue: £5**

**SALE VIEWING:** On the Wednesday prior to the sale from 8.00 a.m. to 7.00 p.m. and on the Morning of Sale from 7.30 a.m. until the sale time at 10.00 a.m. As some items are not inspected by the Auctioneers until they are delivered to the saleroom on the day before the sale we strongly recommend that you telephone us before travelling to view a specific item.

**Sale Day Telephones**

**07989 357218** Condition Reports

**07854 157968** Condition Reports

**07792 544318** General Enquiries, Commission Bids

**07792 544318** Results (after 3.00 pm)

**Auctioneers' Offices:**

London House, High Street,

Bourton-on-the-Water, Glos. GL54 2AP

**Tel: 01451 821666 Fax: 01451 820818**

**E-mail: [fineart@taylorandfletcher.co.uk](mailto:fineart@taylorandfletcher.co.uk)**

**All lots to be cleared from the saleroom by 6pm on sale day**

**Buyers Premium 15% + VAT**

**Bidding:** Please register for a bidding number prior to bidding. Commission and telephone bids must be submitted on the correct forms in full and received by the auctioneers by 7 pm on view day. The auctioneers regret that any bids left after this time are not guaranteed to be processed/executed.

**Packaging:** We can recommend a professional packing firm for any items which you cannot collect. We regret we are not professional packers and cannot take responsibility for items packed and posted by the saleroom on your behalf.



The Timetable below is only a guide. The Auctioneer may go ahead of schedule. It is hoped to maintain a selling rate of about 100 lots per hour and the timetable below is a rough guide only. PLEASE MAKE SURE THAT YOU ARE IN THE SALEROOM AT LEAST 20 MINUTES BEFORE YOU EXPECT A LOT TO BE OFFERED in case the Auctioneer is ahead of schedule.

<u>ORDER OF SALE</u>		<u>Approx. Time</u>
LOTS		
1 to 94	POTTERY AND PORCELAIN <i>(inc. Asian and Oriental Ceramics)</i>	10.00 am - 11.00 am
95 to 111	GLASSWARE	11.00 am - 11.10 am
112 to 127	METALWARE AND BRONZES	11.10 am - 11.20 am
128 to 208	SILVER AND SILVER PLATE	11.20 am - 12.35 pm
209 to 276	JEWELLERY	12.35 pm - 1.25 pm
277 to 306	CLOCKS, WATCHES AND BAROMETERS	1.25 pm - 1.45 pm
307 to 424	OBJETS D'ART, WORKS OF ART AND BIJOUTERIE <i>(inc. Asian and Oriental)</i>	1.45 pm - 3.00 pm
425 to 510	PAINTINGS, PICTURES, LITHOGRAPHS AND ENGRAVINGS	3.00 pm - 3.55 pm
511 to 529	MIRRORS AND BOOKS	3.55 pm - 4.10 pm
530 to 534	HAND KNOTTED RUGS AND CARPETS	4.10 pm - 4.15 pm
535 to 660	ANTIQUA, PERIOD AND DECORATIVE FURNITURE <i>(inc. Oriental)</i>	4.15 pm - 5.30 pm

### SALE NOTES

**THIS, OUR THIRD AND LAST SELECTED LOT AUCTION SALE OF OUR THREE ANNUAL OFFERINGS (four in 2013) FOR 2012** of Antiques, Fine Art and decorative Objets D'Art (*at our regular venue for our three annual specialist Antique and Fine Art Sales*) at **The Pittville Pump Room, Cheltenham, Glos.**, on the 18th October 2012 amounts to a very large **650+ selected lots** with the Auctioneers gratefully acknowledging having been favoured with instructions to sell by auction many fine pieces amassed from several Estates (under direction from Executors and Solicitors) over a very wide area geographically including the clearance of a large Turkdean, Glos. Property, the house itself presently being marketed by the firm for a sum approaching £800,000, an excellent very large consignment of 'fresh to the market' silver via a detached Kemerton, Worcs. property, a clearance of a very large Cleeve Hill (Cheltenham) Mansion within its own grounds, together with a sizeable entry of Asian and Oriental Ceramics and Works of Art that will include Jades, Ivory, Bronzes, Silk Clothing, Tortoiseshell, Lacquer work, Furniture, Silver and Jewellery amongst very many other fine Oriental pieces and items especially selected for this prestigious sale.

Notwithstanding the many fine quality pieces consigned from these particular sources, the Auctioneers are proud to be able to offer for sale by public auction strong entries of Paintings, a privately amassed collection of Arts and Crafts Oak Furniture, quality Clocks and Watches, a very good entry of antique Hunting, Riding and Equine Books and antique & modern estate gem set Jewellery. The sale also boasts entries of Garden Stonework, good Porcelain, Pottery (inc. Chinese) and Glass and has significant entries of assorted Antique and Decorative Furniture.

INTERNET PHOTOGRAPHS: Most lots can be viewed on our website – [www.taylerandfletcher.co.uk](http://www.taylerandfletcher.co.uk)

**INTERNET BIDDING:** We are pleased to announce, in partnership with the-saleroom.com, we are now able to provide online bidding at our forthcoming Fine Art (Pittville Pump Room) auctions. You will be able to see lots on your computer screen at the same time as they appear in the room. You will be able to relay bids through your computer/laptop directly to the Auctioneer. A live audio feed lets you experience the atmosphere of the auction. To register or to find out more information, visit [www.the-saleroom.com/taylerandfletcher](http://www.the-saleroom.com/taylerandfletcher)

**SALE TIME: The sale will commence at 10.00am**

**PURCHASE PRICE and VAT:** The Purchaser shall pay the hammer price together with a **premium of 15% of the hammer price** exclusive of VAT which will be added. **Items purchased live online via 'the-saleroom.com' are also subject to a 3% (on hammer price) surcharge. (Please see ATG media terms and conditions of business)**

**BUYER'S NUMBERS** will be used at this sale. Please register beforehand.

**VIEWING:** On the Wednesday prior to the sale from 8.00 a.m. to 7.00 p.m. and on the Morning of Sale from 7.30 a.m. until the sale time at 10.00 a.m. As some items are not inspected by the Auctioneers until they are delivered to the saleroom on the day before the sale we strongly recommend that you telephone us before travelling to view a specific item.

**\*Artists Resale Rights (ARR) or Droite de Suite - Please note all lots marked with an asterisk (\*) may or may not be subject to an added buyers ARR payment at the maximum rate of 4% of the hammer price, plus V.A.T. on lots of 1000 Euros (approx. £800) or more in accordance with EU Directive 2001/84/EC. Exchange rates will be calculated at the currency conversion rate on the day of the sale. Each time you bid on a lot covered by the ARR, you agree to pay an additional amount equal to the resale royalty, if you are the successful bidder this amount will be added to your invoice. For further information about ARR please contact the Fine Art Department.**

**CAR PARKING:** There are good car parking facilities with over 150 free car parking spaces directly outside the building.

**ATTENDANCE RISK:** All Persons attending on the viewing and sale days do so entirely at their own risk and neither the Vendors nor the Auctioneers will be responsible for any accident, injury, damage or loss whatever or however incurred.

**METHOD OF PAYMENT:** All lots to be paid for before removal on the day of sale. **Cheques from Persons not known to us** only accepted up to the value of a valid cheque card, unless prior arrangements have been made with us, please telephone 01451 821666. **Please note, we are now able to accept payment by credit or debit cards from clients in person.** Debit cards will incur no charge although payment by credit card will be subject to a variable percentage fee levied by the card operator on the day (Please enquire with the Auctioneer's for further information). **We regret we are unable to take Debit card or Credit card payments 'over the Telephone'.**

**COMMISSIONS:** The Auctioneers will faithfully execute **written** commissions without charge, but without accepting responsibility for any oversight. The Auctioneers will absolutely **not be held responsible** for any oversight or mistakes made when pre sale 'private bids' are left with any of the Saleroom Porters, persons not able to attend the Sale personally are invited to complete the auction sale commission bid forms that are freely and widely available at the Auctioneers saleroom offices. **No responsibility whatsoever** will be accepted by the Auctioneers for any 'private' arrangements made in any other regard. Three mobile telephones will be available on the sale day for 'limited' telephone bids only on items deemed by the Auctioneers to have a value of £300 or more. £300 is the **minimum entry level** Telephone bid. **Please Note:** the Auctioneers **will not** be held responsible for any oversight with telephone bidding or for any failure of telephone lines or naturally enough, if the number is called and there is no answer.

**COLLECTION & STORAGE:** **All lots must be cleared by 6.00 p.m. on the day of sale.** Any Furniture lots left with the Auctioneers on the Sale day and subsequently transported back to the Auctioneers Warehouse for collection by the buyer at a later date, will be liable to a charge of £10.00 per item. The Auctioneers will store uncollected items at £5 per week per item. Delivery of furniture locally is subject to a £50 minimum charge, telephone 01451 821666 for more details.

**CONDITIONS OF SALE:** will be exhibited on the premises on day of sale. Some catalogue descriptions indicate damage, repairs or restorations. This is a general guide only and **does not** constitute a full condition report or guarantee for other lots when no reference is made. Lots are described by the Auctioneers or Vendors **but the authenticity must be confirmed by the buyer. Purchasers are advised to examine every lot carefully prior to sale.** All measurements are approximate and the colours printed within this Catalogue are not necessarily 'true'.

**LIGHT REFRESHMENTS:** will be available in the Pump Room Bar.

**SALE RESULTS:** Can be obtained on our website [www.taylerandfletcher.co.uk](http://www.taylerandfletcher.co.uk) from approx. 7.00pm on the day of Sale..



Incorporating Martin Elliott Partnership

*Fine Art Auctioneers*

## Monthly Furniture Sale Dates 2013

We have arranged for monthly collective sales of Antique & Reproduction Furniture and Household Effects to be held at **The Royal British Legion Hall, Bourton-on-the-Water** on the following dates:

**SATURDAY 12th JANUARY** - with specialist Musical Instrument Section

**SATURDAY 9th FEBRUARY**

**SATURDAY 9th MARCH** - including our Spring sale of Sporting Guns, Fishing Equipment, Sporting Pictures, Books and supplementary Collectors' Section

**SATURDAY 13th APRIL** - including Garden Stonework and Garden Machinery etc.

**SATURDAY 11th MAY** - with specialist Antique and Modern Silver Section

**SATURDAY 1st JUNE**

**SATURDAY 13th JULY** - with specialist Antique Clocks and Watches Section

**SATURDAY 17th AUGUST**

**SATURDAY 21st SEPTEMBER** - with specialist Porcelain and Pottery Section

**SATURDAY 12th OCTOBER** - with our Autumn sale of Sporting Guns and Associated Items

**SATURDAY 16th NOVEMBER** - including our twenty third Annual Sale of Paintings, Oils and Watercolours

**SATURDAY 14th DECEMBER** - with specialist Antique and Modern Jewellery and Fine Wines, Ports and Champagnes Sections

**Monthly sales** commence at 10.00 am. Viewing on Friday afternoon from 1.00 pm to 6.00 pm and on the morning of sale from 7.30 am until start of sale at 10.00 am.

**Closing date** for entries into sales is 15 days prior to sale date or earlier if fully booked.

**Four specialist ANTIQUE & FINE ART SALES have been arranged at THE PITTVILLE PUMP ROOM, Cheltenham, Gloucestershire for Thursday 21st March 2013, Thursday 20th June 2013, Thursday 5th September and Thursday 5th December 2013.**

These sales commence at 10.00 am sharp. Viewing all day on Wednesday prior from 8.00 am - 7.00 pm and on sale day morning from 7.30 am - until start of sale at 10.00 am - Full details from Martin Lambert and Stephen Sheppard.

**Valuations:** We can provide detailed inventories and valuations for probate, insurance and family division. We give free valuations for auction sale purposes at our Bourton-on-the-Water office on Wednesday mornings between 9.00 am and 1.00 pm or a valuer will be pleased to call at your home to appraise a single item or the whole house contents. We also regularly undertake entire house clearances and haulage and storage of any items can be easily arranged.

### **Tayler & Fletcher**

London House, High Street, Bourton-on-the-Water, Gloucestershire GL54 2AP

Telephone: 01451 821666 Fax: 01451 820818 E-mail: [fineart@taylerandfletcher.co.uk](mailto:fineart@taylerandfletcher.co.uk)

**Website:** [www.taylerandfletcher.co.uk](http://www.taylerandfletcher.co.uk) for sale previews, estimates, regular updates, results, lot images and entry forms for e-mail purposes



Incorporating Martin Elliott Partnership

*Fine Art Auctioneers*

## LOCAL COTSWOLD OFFICES

AUCTIONEERS, VALUERS & ESTATE AGENTS • AGRICULTURAL, RESIDENTIAL & COMMERCIAL

“INDEPENDENT & PROFESSIONAL SURVEYORS”

*Serving the North Cotswolds and surrounding areas with Cotswold Offices at*

### STOW-ON-THE-WOLD

Tel: 01451 830383 Fax: 01451 831791

**Edward Bagnall** M.R.I.C.S. (Director)

**Errol Mews** F.R.I.C.S., F.A.A.V. (Consultant)

**Elizabeth Billot** M.N.A.E.A. (Residential Lettings)

**Martin Elliott** F.R.I.C.S. (Commercial)

**Charles Carter-Lewis** M.R.I.C.S., F.A.A.V. (Rural Land Agent)

### BOURTON-ON-THE-WATER

Tel: 01451 820913 Fax: 01451 820818

**Charles Arkell** F.R.I.C.S., F.A.A.V. (Director)

**Matthew Harvey** BSc. M.R.I.C.S. (Residential Sales)

**Martin Lambert** (Fine Art and Antiques Auctioneer and Valuer)

**Stephen Sheppard** (Fine Art and Antiques Auctioneer and Valuer)

**Claire Mowat-Maconochie** (Residential Lettings)

**Adrian Cannon** MSc. M.R.I.C.S., F.A.A.V. (Rural Estate Management)

### CHIPPING NORTON

Tel: 01608 644344 Fax: 01608 641001

**Alex McEntyre** B.A. (Hons) M.R.I.C.S. PGDip. Surveying (Residential Sales)

**Caroline Smith** M.R.I.C.S. (Residential Lettings)

**Peter Talbot** F.R.I.C.S., F.A.A.V. (Consultant)

---

## APPLICATION FORM - YEAR 2013

If you would like to receive the 12 monthly sale catalogues together with the 4 FINE ART AND ANTIQUES auction sale catalogues and details of any private or supplementary sales there will be a charge of £30 for the year to include postage. Please complete the form below and return it to our Bourton-on-the-Water office, together with your cheque value **£30**.

**The 12 months subscription will begin upon receipt of your cheque.**

Name: .....

Tel. No: ..... Email: .....

Address: .....

.....

.....

Specialist Interests: .....

Please return to: **Taylor & Fletcher**, Auctioneers, Valuers & Estate Agents,  
London House, High Street, Bourton-on-the-Water, Gloucestershire GL54 2AP

# CATALOGUE

Most lot images can be viewed on our website  
[taylerandfletcher.co.uk](http://taylerandfletcher.co.uk)

Commencing at 10.00 am



Lot 2

- 1 A selection of small Ceramics and Bijouterie etc., including two George III Bilston Enamel style Patch Boxes, one with the motto "Fear God and Honor The King, Kiss A Pretty Girl That's No Sin" (12 items)  
**£150 - £200**
- 2 A pair of early 20th Century Dresden style three handled porcelain Vases, each gilded and very finely decorated with floral sprays etc., printed marks to undersides, approx. 25cm high  
**£120 - £150**
- 3 A selection of mostly late 19th Century Wedgwood blue Jasperware including Vases, Tea Pot, lidded Sucriers, Candlesticks, Biscuit Barrel etc. (selection)  
**£200 - £300**

- 4 A pair of early/mid 19th Century Staffordshire style porcelain Figure Models, male and female, each figure upon a recumbent sheep, each approx. 12.5cm high  
**£200 - £300**
- 5 A 19th Century Japanese porcelain Vase, flaring neck above an elongated baluster body hand decoration in enamels with chrysanthemums, prunus etc., in typical style above a lappet style border, 38cm high  
**£100 - £150**
- 6 20th century Chinese Republic period famille verte porcelain Stem Dish, the circular shallow dish decorated with a central white slip Chinese Shou character surrounded by geometric and floral borders. The underside of the dish decorated with iron red bats alongside a Chinese wax seal, the tapering stem having a bulbous green, iron red and gilt hand painted border and the base decorated with a green lappet border, Diameter 19cms, Height 9cms.  
**£100 - £200**
- 7 An antique Asian green glaze, three scroll handled Bottle retaining the remains of the original woven rattan binding, 25cm high  
**£50 - £80**
- 8 A late 18th Century Chinese exportware, octagonal blue and white Platter, Willow pattern (originally from the Nanking Cargo), 32cm wide  
**£200 - £250**
- 9 An early 20th Century Royal Worcester blush porcelain Jug, the gilded handle modelled as a branch, further decorative pierced branches and the bulbous, reeded, quatreform style body also hand gilded and decorated with floral sprays, printed marks to underside and numbered 1507, initialled BT, 22cm high  
**£150 - £200**
- 10 An early 20th Century Royal Worcester blush porcelain Ewer, the high arched gilded handle upon a tapering wrythern body gilded and hand decorated with various floral sprays, printed marks to underside and numbered 1652, 22cm high  
**£150 - £200**



Lot 4



- 11 A Royal Worcester porcelain Vase and Cover, decorated with various fruits, approx. 15cm high **£160 - £180**
- 12 A large Chinese porcelain, baluster shaped Vase, yellow “scaly” style ground and decorated with other vases and auspicious objects etc., six character mark to underside of base, 41cm high **£100 - £150**
- 13 An 18th Century Chinese porcelain Ginger Jar (minus cover), Taoist symbols and flowers against foliate designs and a Green key style top border, 20cm high **£30 - £50**



**Lot 14**

- 14 A large Chinese porcelain Meiping Vase, the shoulder decorated with a continuous band of stylized foliate designs, above an eight character signature, the main body with horsemen above a lotus lappet style base, 46cm high **£100 - £200**
- 15 Keith Murray (for Wedgwood), an Art Deco period light beige pottery Tankard of banded, cylindrical form, impressed and printed marks to underside 12cm high **£30 - £50**
- 16 Antique South American Chimu Peruvian Blackware Pottery Jug with figural spout and incised floral decoration, Height 23cm (A/F restored). **£80 - £120**
- 17 19th century American pottery figure group supported on a stepped oval base, impressed marks “BB” and numbered 2896, Height approx. 17cm (A/F). **£60 - £90**
- 18 Antique Mediterranean slip decorated pottery redware bowl, Diameter 17cm. **£100 - £150**

- 19 Pair of Chinese blue and white Bottle Vases floral decorated with a cracked ice ground, Height 11.5cm (2) **£40 - £60**
- 20 An unusual Art Deco period Clarice Cliff “Bizarre” pottery “lotus” shaped pottery Jug, concentric gilded circles and vertical orange wave design, printed marks to underside of base, approximately 19cm high **£30 - £50**
- 21 Two late 18th Century Chinese porcelain Tea Bowls and Saucers (some damage), hand decorated in typical style together with one other slightly later English example (5) **£15 - £25**
- 22 A 19th Century hard paste porcelain (probably Nymphenburg) Model of a sad Punchinello holding his down facing head in his right hand (the vendor advises this piece was brought back from Berlin at the end of the war), 14.5cm high **£200 - £300**



**Lot 23**

- 23 A Wemyss ceramic Model of a sleeping pig, hand decorated with cabbage roses, impressed and hand painted Wemyss marks to underside, small repair to toe, some surface glaze crazing, 16.5cm long **£200 - £300**
- 24 A large 20th Century Meissen white glaze porcelain Figure Model of a female with headdress and bare footed, carrying a bowl, to her right a large jar, impressed and painted marks to underside, 33cm high **£100 - £150**
- 25 A pair of early 20th Century Japanese Satsuma pottery Vases of baluster form, each decorated with menacing figures, each approx. 12.5cm high **£50 - £80**
- 26 Royal Doulton Harlequin H.N.2737 and Columbine H.N.2738 (a pair) **£100 - £150**
- 27 A large Lladro three female Figure Group, decorator V Navarra No. 875, on round turned mahogany base, approx. 34cm high (including base) **£100 - £200**
- 28 A large Lladro porcelain Figure Group of two females, a large tree and campana style urn with flowers etc., on shaped mahogany base, approx. 49cm high (including base) **£150 - £250**





**Lot 33**

- |  |  |
|--|--|
| <p><b>29</b> A large Royal Dux porcelain Figure Group of a seated lady and gentleman taking tea and dressed in 18th Century costume, approx. 33cm high <b>£200 - £300</b></p>  | <p><b>39</b> Two hand decorated German porcelain Figure Groups one seated lady writing her attendant suitor with rose, the other a male and female in 18th Century attire with sheep and lap dog (2) <b>£80 - £120</b></p>                         |
| <p><b>30</b> A fine Royal Dux porcelain Figure Model of a lady in a sedan chair with recumbent dog and two attendant footmen, approx. 39cm high <b>£200 - £300</b></p>   | <p><b>40</b> A pair of hand decorated Dresden porcelain Figure Models male and female, both with flowers, he with attendant and affectionate dog, each on circular base with gilded Greek key pattern, approx. 22cm high (2) <b>£70 - £100</b></p> |
| <p><b>31</b> A pair of Limited Edition open winged Sculptural Birds each by Albany Fine China Limited, England, each modelled by David B Smith, one is Kittiwake, the other Arctic Tern <b>£200 - £400</b></p>   | <p><b>41</b> A hand painted German porcelain Comport, reticulated circular flower encrusted top and figural style base with two young children on a seesaw, 32cm high <b>£80 - £120</b></p>  |
| <p><b>32</b> A large pair of hand decorated German porcelain, five light figural Candelabra of male and female, he with flagon and cup, she with a basket of fruits, each approx. 55cm high <b>£150 - £250</b></p>   | <p><b>42</b> A hand decorated Continental porcelain Comport, reticulated bowl shaped top with floral sprigs and central rose spray, three winged cherubs below, on triform base (minor damage), 21cm high <b>£40 - £60</b></p>                     |
| <p><b>33</b> A large and magnificent hand painted Lladro porcelain Figure Model "Cinderella's Coach" sculpted by J Roiz, decorated by J Ruiz, numbered 1139, approx. 67cm long x 29cm high (including shaped mahogany stand) <b>£500 - £800</b></p>                              | <p><b>43</b> A Meissen style porcelain Dish, rose ground and gilded cartouches painted with internal floral sprigs/sprays, 28cm diameter <b>£30 - £50</b></p>  |
| <p><b>34</b> A hand decorated and gilded mid 18th Century style German porcelain Clock Case, encrusted with flowers in Coalbrookdale style and with floral vignettes, cream round dial with Roman numerals and with eight day movement, approx. 45cm high <b>£100 - £200</b></p> | <p><b>44</b> Two hand decorated Royal Doulton porcelain Figure Models "Elaine" (HN2791) and "Mary" (HN3375) (Figure of the Year 1992) (2) <b>£50 - £70</b></p>   |
| <p><b>35</b> A set of four of Royal Crown Derby porcelain Figure Models allegorical of the Seasons, each hand decorated and in various pose/guise, printed marks to undersides, also with some signatures, the tallest figure approx. 23cm <b>£200 - £400</b></p>                | <p><b>45</b> Three hand decorated Royal Doulton porcelain Figure Models "Katie" (HN3360), "Summertime" (HN3478) and "Patricia" (HN3365) (Figure of the Year 1993) (3) <b>£60 - £80</b></p>   |
| <p><b>36</b> A hand decorated German porcelain Figural Group, young girls playing with their dog, 26.5cm high <b>£80 - £120</b></p>  | <p><b>46</b> A pair of 20th Century Spode fine bone china Limited Edition miniature Urns, Covers and Stands "The SS Great Britain Cup" (161/500) and the "Armada Cup" (35/500), each approx. 11.5cm high (including stands) <b>£50 - £70</b></p>   |
| <p><b>37</b> Three hand decorated Sitzendorf style porcelain Figures, a Shepherd and Shepherdess with sheep and one further Model of a recumbent child Shepherd with attendant sheep (3) <b>£100 - £150</b></p>  | <p><b>47</b> A modern Limited Edition 57/500 Spode fine bone china two handled Vase and Cover "The Armada Vase", 27cm high (complete with certificate) <b>£60 - £90</b></p>  |
| <p><b>38</b> A pair of hand decorated Sitzendorf porcelain Candlesticks, each in bocage fashion and with exotic birds, approx. 21cm high <b>£50 - £70</b></p>  | <p><b>48</b> A set of six modern Limited Edition (numbered variously) Spode fine bone china Armada Series Plates, each plate approx. 23.5cm diameter <b>£30 - £40</b></p>  |



**Lot 49**

- 49 Two fine quality Royal Crown Derby gilded and decorated porcelain Models of peacocks, one signed underside S Kinsey and J Plant, the other signed M E Townsend and J Plant, the higher model approx. 23cm high **£120 - £180**
- 50 A pair of hand decorated German porcelain Figure Models of two young children in 18th Century dress with lambs etc., each approx. 13cm high **£40 - £60**
- 51 A fine and large hand decorated German porcelain Figural Lamp and Shade, the flower encrusted reticulated shade above a base with two figures in early dress and attendant dog, approx 58cm high **£150 - £200**
- 52 Moorcroft Liberty & Co. "Tudric" Pewter Tazza in the Pansy pattern on a cobalt blue, signed to base "Tudric 01312", Height 23cm, Diameter 26cm (A/F, hairline crack). **£300 - £400**
- 53 An early 20th Century (circa 1905) Royal Worcester baluster shaped, porcelain bottle Vase, hand gilded and decorated with peacocks within countryside with leaves and flowers etc., printed and painted marks to underside of base, 21cm high **£50 - £70**
- 54 A late 19th/early 20th Century Hadley's Worcester porcelain Vase, elongated waisted neck above baluster shaped body hand gilded and decorated with a cock and hen pheasant bird within continuous country landscape, on circular foot, printed and painted marks to underside of base, approx 18cm high (small chips and small hairline to lip) **£30 - £50**

- 55 A late 19th/early 20th Century Faience Vase modelled as a striding elephant (some damage) **£40 - £60**
- 56 A set nine late 19th Century Berlin (KPM) porcelain Dessert Plates each gilded border and with difference hand decorated vignettes of various fruits etc. (9) **£90 - £120**
- 57 An unusual early 20th Century Royal Worcester porcelain pink blush Ewer hand decorated with roses and floral sprays, printed marks on underside, 16cm high **£40 - £60**
- 58 A late 19th Century Continental porcelain (probably French) gilt metal mounted Tea Cup, hand gilded and decorated with a vignette of a cherub and floral spray to reverse **£40 - £60**
- 59 A pair of late 19th/early 20th Century two handled Dresden porcelain Vases in neo-Classical style (2) **£60 - £100**
- 60 A very good 19th Century hand decorated Meissen porcelain Group, two figures in 18th Century dress allegorical of the Sciences with seated pug dog and Classical style capital (minor damages), impressed, incised and painted blue crossed Meissen swords mark to underside, 22.5cm high **£500 - £800**



**Lot 54**





**Lot 61**

- |  |   |
|--|---|
| <p><b>61</b> A pair of Minton porcelain Ewers, painted oval reserves of cherubs against a blue and gold ground, by A Bullemier, 29cm high <b>£200 - £300</b></p>                       | <p><b>72</b> A 19th Century Chinese porcelain Vase in earlier Kangxi style, flaring rim above waisted neck and baluster shaped body hand decorated in green and yellow enamels with flying dragons chasing sacred pearls of wisdom above stylized waves and leaping fish, six character mark to neck, 28cm high, <i>illustrated inside back cover</i> <b>£80 - £120</b></p> |
| <p><b>62</b> A Belleek clover leaf Basket with flowers in raised relief, 14cm wide <b>£150 - £200</b></p>  | <p><b>73</b> Two early 20th Century (circa 1905) Royal Worcester Hadley ware miniature porcelain Ewers, each gilded and hand decorated with roses against ovoid bodies, each on conforming circular foot, each approx 10.5cm high (highest point) (2) <b>£60 - £100</b></p>   |
| <p><b>63</b> A late 19th Century Continental Figure of a man on a scroll base, 21.5cm high <b>£120 - £150</b></p>  | <p><b>74</b> Pair of 19th century Chinese underglaze blue and white shallow bowls decorated in iron red with birds amongst flowering prunus, Diameter 26cms, <b>£80 - £120</b></p>  |
| <p><b>64</b> A late 19th Century Continental Figure of a boy holding a cage on a square base, 14cm high <b>£80 - £120</b></p>  | <p><b>75</b> 19th century Chinese scholars miniature blue and white bowl decorated with figures in landscape and a calligraphy script, signed with a four character mark to the base, diameter 4.5cm <b>£50 - £100</b></p>  |
| <p><b>65</b> A pair of 19th Century porcelain Figures, each of a couple within an arbour, red script D marks circa 1815, 14cm (A/F) <b>£200 - £300</b></p>                             | <p><b>76</b> Chinese republican period Yixing Teapot, the plain circular body with impressed seal mark to base and signed to the underside of the handle and inside the lid, Height approx 7cm. <b>£30 - £50</b></p>  |
| <p><b>66</b> A Satsuma Vase of triangular form, painted three shaped reserves of figures in a landscape etc., signed, 7.5cm high (chip A/F) <b>£100 - £150</b></p>                     | <p><b>77</b> Chinese republican period Yixing Teapot of archaic form, the lid surmounted with a buddhistic lion, the body decorated with Chinese script with an impressed seal mark to the base and inside the lid, supported on four horned mask feet, Height approx 12cm. <b>£50 - £80</b></p>  |
| <p><b>67</b> A pair of Minton Vases each having painted reserves of roses on a yellow ground, 12.75cm high <b>£100 - £150</b></p>  | <p><b>78</b> Late 19th century Chinese Yixing circular Jar and cover, decorated in multi coloured enamels depicting Butterflies and scrolling foliage, Height 15cm, Diameter 11cm. <b>£30 - £50</b></p>   |
| <p><b>68</b> A pair of late 19th Century French octagonal Scent Bottles with shaped stoppers on stepped bases, 16.5cm high (2) <b>£120 - £150</b></p>                                  | <p><b>79</b> Late 18th century Chinese hexagonal blue and white Snuff Bottle decorated with Chinese characters, Height 8cm <b>£60 - £80</b></p>   |
| <p><b>69</b> A pair of French Scent Bottles painted with sprays of flowers on a purple ground, 21.5cm high <b>£180 - £220</b></p>  |   |
| <p><b>70</b> A 20th Century Dresden Vase painted with Deutsche blumen, 17.75cm high <b>£70 - £90</b></p>   |   |
| <p><b>71</b> Two early pottery Bowls, hand decorated stylistically in underglaze blue (probably 17th/18th Century Vietnamese), the large Bowl 16.5cm diameter (2) <b>£40 - £60</b></p> |   |

- 80 A 19th Century Chinese hand painted blue and white Scent Flask, the flattened oval body decorated with immortals amongst stylized clouds above a wave border, the underglaze blue highlighted with an iron red glaze, hand painted six character mark to base, 11.5cm high x 6.5cm wide **£60 - £80**
- 81 An 18th Century blue and white Tankard having a loop handle, the cylinder shaped body with a brown rim and hand painted decoration depicting a traditional Chinese building in a rocky landscape, 12cm high (A/F fritting to handle) **£80 - £120**



**Lot 82**

- 82 20th century Japanese blue and white circular five piece segmented porcelain rotating picnic set. **£80 - £120**
- 83 An antique Chinese pottery standing Figure decorated in cream and green glazes, 29cm high (A/F) **£60 - £100**
- 84 A Chinese Kangxi style famille verte Vase and Cover decorated with Imperial dragons contesting a flaming pearl amongst stylized clouds, signed to base, 24cm high **£50 - £80**
- 85 A 19th Century Canton Chinese Tea Pot decorated with figures within panels in famille rose enamels and gilded (rubbed), original handle, 17cm high **£60 - £100**
- 86 An early 20th Century Canton Chinese Charger decorated with a mythical two tailed beast in landscape, 31cm diameter **£50 - £80**
- 87 An early 20th Century Japanese Satsuma Tea Set, comprising six Cups and Saucers, Tea Pot, Sugar, Container and Milk Jug, decorated with gilt and enamels and signed to the base **£150 - £250**
- 88 A large mid 19th Century Chinese baluster shaped porcelain Vase having flaring neck (hairlines and some damage), hand decorated in underglaze blue and white with a continuous landscape scene, figures fishing, buildings and mountains etc., in typical style, 44cm high **£50 - £80**

- 89 A large late 19th Century Chinese hard paste porcelain celadon glaze Canton Vase, flaring neck (badly damaged, broken and repaired) above a baluster shaped body hand decorated in enamels with flowers and prunus and animals etc., approximately 60cm wide **£50 - £70**
- 90 A collection of Japanese Satsuma to include a Koro on a wooden stand, Lotus Bowl on wooden stand and a Japanese Lady Figure wearing a Kimono, the Koro and Lotus Bowl signed to the base and decorated with Japanese figures on a gilt background (3) **£100 - £200**
- 91 A late 19th/early 20th Century Japanese bottle Vase of squat ovoid shape, hand decorated in under glaze blue with an exotic bird perched upon a branch, six character mark to underside of base, 12.5cm high (chip to lip) **£50 - £70**
- 92 A small 19th Century Japanese porcelain Sake Cup, sage green body with a stylized gilded band, the interior decorated with a single crab amongst foliage, mark to underside within concentric circles, 4.5cm high **£25 - £40**
- 93 A late 19th Century Japanese Kutani Vase, hand gilded and decorated in typical colours (now as a lamp) **£30 - £50**
- 94 A pair of Japanese Vases painted with serpents, 20.25cm high **£120 - £180**

**GLASSWARE**



**Lot 95**

- 95 A selection of good quality Paperweights including glass Ink Bottle with spire Stopper and Millefiore style base, a similar sized circular Paperweight with Millefiore canes and Latticinio style twists, a scramble style Paperweight with scattered muslin, a Clichy style faceted Millefiore mushroom Paperweight with concentric circles and one other similar faceted square shaped Paperweight also with Millefiore style canes and central flower head (5) **£200 - £300**
- 96 A large and heavy Lalique frosted glass Cockerel, hunched and in fighting stance, on circular foot, etched mark to underside of base, 20.5cm high **£200 - £300**





**Lot 97**

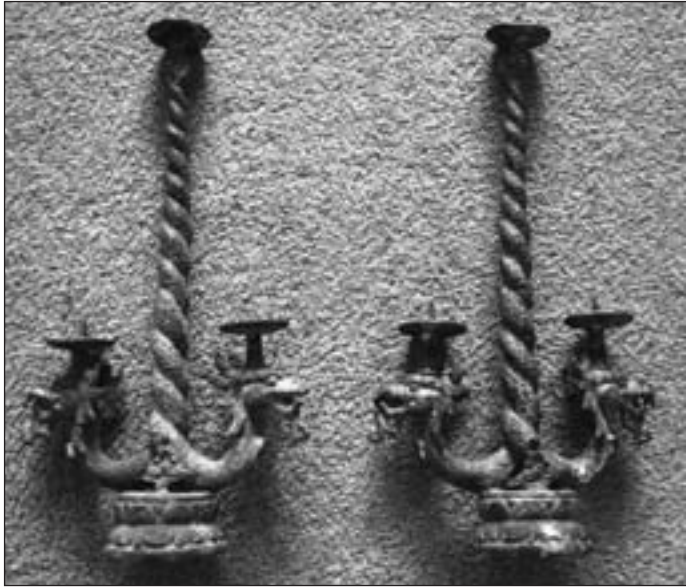
- 97** An antique Clichy style Paperweight, Millefiore garlands, five central green, red and blue complex canes are bordered by four spaced 'C' shaped garlands which alternate between white stardust canes and green, red and blue complex canes, clear ground, 7cm diameter **£200 - £300**
- 98** A good set of ten Waterford crystal Wine Goblets, each on Silesian style stem and with circular foot **£100 - £150**
- 99** An early 19th Century cut glass Ship's Decanter with mushroom stopper, the decanter body decorated with swags and star cut base, 25cm high **£30 - £50**
- 100** A late 19th Century Arts and Crafts waisted Decanter having hallmarked silver neck (assayed London 1897), 30.5cm high (including stopper) **£30 - £50**
- 101** A fine pair of mid/late 20th Century cut crystal Thomas Webb thistle shaped Vases, each on circular foot and star cut base, each approx. 32cm high **£100 - £200**
- 102** A globe and shaft hand cut Decanter with a silver mounted top together with a hallmarked silver Sherry Label **£50 - £70**
- 103** Five early 19th Century green glass Wine Glasses **£30 - £50**
- 104** A 20th Century cut glass Goblet and Cover, hand engraved "The Old House" with wheel cut floral spray and large circular foot similarly engraved with fruiting vine and an anchor symbol, 30cm high **£60 - £90**



**Lot 105**

- 105** A Bohemian overlaid green glass Vase enamelled with alternating panels of flowers and figures, 20.25cm **£300 - £350**
- 106** A George III Bristol blue glass Decanter with oval stopper and gilded cartouche, inscribed Brandy, 33cm high **£70 - £100**
- 107** A pair of white overlaid glass Bells together with a pair of porcelain Scent Bottles and stoppers **£60 - £90**
- 108** A pair of heavy cut glass, square form and hobnail crystal Spirit Decanters each with mushroom style stopper and hallmarked silver collar, 20th Century, the collars assayed 1974 (2) **£40 - £60**
- 109** A large and heavy hand cut crystal vase shaped Racing Trophy "The Cynthia Cutler 60th Birthday Handicap Hurdle", raised on faceted star cut base, 26cm high x 20cm diameter **£40 - £70**
- 110** A 20th Century glass and metal mounted Gucci Dressing Table set comprising a Hair Brush, two circular glass Requisite Jars, each with star cut base, one further taller rectangular example and three Scent Bottles, some pieces marked Gucci 800 (7) **£50 - £80**
- 111** A good selection of late 19th Century Paperweights (hand coloured, transfer decorated backs including Crystal Palace, Great Exhibition, Brighton Pavilion, Welsh national Costume etc. (approx. 45) **£100 - £200**

**METALWARE AND BRONZES**



**Lot 112**

- 112** A pair of antique Chinese cast bronze entwined Dragon Candlesticks, supported on lotus bases, dark patination and showing traces of original gilding, 30cm x 17cm (2) **£300 - £500**
- 113** An early 20th Century Chinese cloisonné black enamel Cup and Cover decorated with yellow dragons contesting the flaming pearl of wisdom, 22cm high **£80 - £120**

- 114** An early 20th Century Chinese Enamel Box with cedar lining together with a Chinese cloisonné Bowl **£40 - £60**
- 115** A finely modelled late 19th/early 20th Century Austrian style patinated bronze Sculpture Model of a striding Crane, signed to underside of tail feathers, 14cm high **£100 - £150**
- 116** After Franz Bergman (1898-1963) an early 20th Century cold painted bronze Model of a Kingfisher together with a 19th Century miniature French style bronze Chamberstick, the Kingfisher approx. 6cm high (2) **£100 - £150**
- 117** A pair of antique Campana style bronze Urns converted to lamps, each on turned rosewood base **£180 - £220**
- 118** A late 19th Century patent (Pratt) folding brass Cat **£80 - £100**
- 119** An unusual patinated bronze Sculpture (seated Knight with Jacob's ladder to front and winged angel protruding) upon a horse, his head angled to the left, 19cm **£180 - £220**
- 120** A pair of 19th Century Italian Renaissance style patinated bronze Hat/Coat Hooks, each headed with a Bacchanalian mask, stamps to undersides, each approx. 22cm high **£140 - £160**
- 121** A set of four cherubic style Lead Figures (probably allegorical of the seasons), each on octagonal shaped plinth base, the tallest approx. 66cm high **£1500 - £2000**
- 122** A 19th Century Bronze Chenets, in earlier style decorated with swags etc., 120cm wide **£350 - £450**



**Lot 121**





**Lot 123**

- 123** A Chinese Bronze Model of a prancing horse, gilt highlights and with gilded Chinese characters to back of horse, complete with original certification stating that the bronze was bought from the Imperial Palace of Sui Chu Tang, Qing Dynasty, approximately 29cm high x 26cm long **£2000 - £2500**
- 124** A pair of early 20th Century Chinese circular cloisonné Boxes and covers each decorated with an open mouthed dragon, 6cm diameter **£50 - £70**
- 125** A Japanese elongated patinated bronze Vase etched and decorated in relief with a swan in flight, 14.5cm high **£30 - £50**
- 126** An interesting selection of Eastern style patinated Bronze Warriors on stylized animals (5) **£30 - £50**
- 127** Two early 20th Century Chinese bronze archaic vessels, signed Case and a Censor (2) **£100 - £150**

**SILVER AND SILVER PLATE**

- 128** Mid 20th century hand made designer Sauce Boat and Spoon (prototype?), Heavy gauge metal, Silver plated, Height 11cm, Length 17cm **£40 - £60**
- 129** A 19th Century Asian white metal Spice Box, the top and all sides hand chased and decorated with Buddhist symbols, good colour and patina, 5.8cm x 4.3cm **£100 - £200**
- 130** A 19th Century Chinese white metal and ivory Anointing Spoon carved with a Chinese Rui finial and Shou symbol, 15cm long **£60 - £90**

- 131** A set of six 20th Century Chinese sterling silver and Jadeite Tea Spoons with bamboo handles (6) **£60 - £80**
- 132** A silver Necklace set with pearls and silver links **£40 - £60**
- 133** A seven sided hallmark silver Sugar Caster, approx. 171gms **£140 - £160**
- 134** A very ornate sterling silver pierced Fruit Bowl, approx. 331gms **£250 - £300**
- 135** A footed silver pierced decorated Fruit Bowl, assayed Birmingham 1912, approx. 496gms **£350 - £450**
- 136** A heavy silver Salver on ball and claw feet, assayed Sheffield 1896, approx. 807gms **£550 - £600**
- 137** A fine quality heavily decorated silver Tankard, assayed London 1897, approx. 326gms **£250 - £300**
- 138** An oval silver flip top Tobacco Box, assayed London 1896, approx. 72gms **£60 - £90**
- 139** A silver four slice Toast Rack, assayed Birmingham 1899, approx. 112gms **£80 - £120**
- 140** A fine silver three branch Candlestick, assayed Birmingham, approx. 1600gms **£1000 - £1200**
- 141** A Hand Bell having hallmarked silver handle, assayed Birmingham 1948 **£60 - £90**
- 142** A pair of Georgian silver Serving Spoons, assayed London 1814, approx. 171gms **£90 - £120**
- 143** A fine quality silver Dish with pierced decoration, assayed Sheffield 1896, approx. 166gms **£130 - £160**
- 144** A cased set of silver Coffee Spoons, assayed Birmingham **£30 - £50**
- 145** A set of six silver "Bean" Coffee Spoons, assayed Birmingham **£30 - £50**
- 146** A heavily decorated silver Cigar Box, assayed Birmingham 1894, approx. 172gms **£130 - £160**
- 147** A matched pair of Georgian silver Salad Servers (later converted and engraved/chased), each with vacant terminal cartouche, London assay marks, approx. 215gms **£100 - £150**
- 148** A very heavy Russian silver Tea Pot marked for St Petersburg 1870 by Karl Janselainen **£500 - £700**



**Lot 129**



**Lot 149**

- 149** A fine late 19th Century novelty silver plated Cruet by Elkington & Co., comprising Jockey cap Salt (with gilded interior), two removable riding boots (one as a Pepperette the other as a Mustard) with riding crop Spoon and a removable Vinegar and Spoon in the shape of a conical race starters loud hailer, with "stirrup" style handle, the horseshoe shaped base with the marks for Elkington & Co., capital G within barrel shaped cartouche, approx. 8.25cm high (not including spoon) **£200 - £300**
- 150** Early Motoring/Racing Car interest, a cased Trophy set of three hallmarked silver Spoons (Birmingham assay marks), the interior of the case bearing hallmarked silver presentation plaque, "One Hour Trial, Brooklands 1934, J.R.H. BAKER, Car Speed 77.60 M.P.H." **£150 - £200**
- 151** A fine quality 19th Century mahogany cased twelve place setting, mother of pearl handled and silver mounted Dessert Knives and Forks service, the silver mounts assayed Sheffield 1877 **£200 - £300**
- 152** A heavy 20th Century silver Salver, the Celtic border in "Lindisfarne" pattern and surrounding a central upper cased engraved 'R', on three shaped feet, 20.5cm diameter, approx. 382gms, assayed Birmingham 1960 **£150 - £200**
- 153** A heavy 20th Century silver Rose Bowl, the border finely moulded in Monticelli style, engraved "PR" monogram on circular foot (turned wooden plinth base), the silver approx. 592gms, 20.5cm diameter, assayed Birmingham 1960 **£150 - £250**
- 154** Three small Bon Bon Dishes including a lozenge shaped, two handled engraved example (3) **£60 - £90**
- 155** A good late 18th Century style hallmarked silver Sucrier, the hinged domed lid surmounted with an urn finial and above two lion mask and ring handles, lobed lower body and on oval feet, assayed London 1905, approx. 236gms, 12cm wide **£100 - £150**

- 156** A heavy (weighted) early 20th Century silver Cigarette Box, the hinged lid with engine turned decoration and a slim foliate style cast border, similar foliate cast border as a lower foot, assayed Birmingham 1929, 9.5cm wide **£100 - £150**
- 157** A good red Morocco cased set of four heavy hallmarked silver Dessert Serving Spoons (two matched pairs), one pair George III assayed 1814, the other pair William IV assayed 1831), each later chased and engraved with foliate style decoration, each with engraved armorial crest (London assay marks), each approx. 22.5cm long, total silver weight approx. 367gms **£200 - £250**
- 158** A good red Morocco and gilt outlined cased set of four silver plated Apostle style Dessert Serving Spoons, two male and two female figural finials, the large circular bowls with "rat tail" style handle fixing **£100 - £150**
- 159** A cased three piece hallmarked silver Dessert Service comprising two Berry Spoons and a Sugar Sifter, each piece later engraved and chased with fruits in relief etc., the Serving Spoons assayed London 1819, the Sifter Spoon marks rubbed, approx. total silver weight 166gms **£100 - £150**



**Lot 160**

- 160** A cased pair of very fine quality silver gilt Dessert Serving Spoons (modelled as Anointing Spoons), each bowl with foliate style engraved decoration, each handle cast and with mythical beast head finial, each assayed London 1910, approx. 25.5cm long, approx. 204gms (total silver weight) **£150 - £250**
- 161** A Georgian hallmarked silver Salver, the raised and cast foliate style shaped border surrounding later engraved decoration of thistles and further foliate etc., vacant circular cartouche and raised on three rococo style cast feet, 27.5cm diameter, assayed London (possibly 1786), makers mark W.R., approx. 609gms **£200 - £300**
- 162** A cased set of hallmarked silver Commemorative Tea Spoons "Monarch's of The Century 1837-1937" commemorating the 1937 Coronation), total silver weight approx. 106gms **£60 - £90**
- 163** A set of six hallmarked silver Cocktail Sticks, the finials modelled as standing cockerels **£40 - £60**





**Lot 164**



**Lot 166**

**164** An early 20th Century Japanese silver and lacquer rectangular Cigarette Box, the top inlaid with silver and gold and decorated with two hares amongst foliage, signed lower left, the box supported on shaped bracket feet and signed to the base with Japanese characters, 14cm x 10cm **£300 - £500**

**165** A mid 19th Century cased hallmarked silver Communion Set, the Goblet with gilded interior, each with Chester assay marks, approximately 98gm **£50 - £80**

**166** A 17th Century style silver Porringer by Daniel and John Wellby, the body decorated with gadrooned bands and punch work decoration, having a central vacant cartouche surrounded with scrolling acanthus and applied 'C' scroll handles, hallmark London 1879, approx. 200gm, 8cm high **£80 - £120**



**Lot 167**

**167** A 19th Century silver castle top Vinaigrette by Nathaniel Mills, the top decorated in relief with Abbotsford House and opening to reveal a pierced and engraved grille and silver gilt interior, the whole modelled as a miniature book, hallmark Birmingham 1839, approx. 30gm **£300 - £500**

**168** An early 20th Century Chinese export silver Model of a Chinaman carrying two baskets by Wang Hing of Kowloon, the baskets stamped "WH90", approx. 123g **£100 - £150**

**169** A heavy white metal Islamic style waisted Beaker with two shaped, vacant cartouches to the circular foot **£70 - £100**

**170** An early 20th Century three piece silver Tea and Coffee Service comprising Coffee Pot, Tea Pot and two handled Sugar, all assayed Birmingham, the coffee pot 1929, the tea pot and sugar 1927 **£300 - £400**

**171** A heavy early 20th Century, twelve division, hallmarked silver Toast Rack on six bun feet, assayed Sheffield 1909 **£140 - £160**

**172** A pair of George III period neo-Classical style two handled boat shaped Salts (each with Bristol blue glass liner), each on reeded oval foot, makers mark RH (for Robert Hennell), together with a similar period pair of neo-Classical, urn shaped Pepperette **£250 - £350**



**Lot 168**



**Lot 173**

- 173** A fine late 19th Century Chinese heavy silver Vase (marks to underside), of tapering cylindrical section, the main body engraved and chased repousse style with dragons amongst stylized sky, with vacant ruyi head cartouche, 8.75cm high, approx. 28gms **£500 - £700**



**Lot 174**

- 174** A 19th Century Russian Niello decorated silver Snuff Box, the cover decorated with a troika surrounded with a scrolling foliate border, the base similarly decorated with a central circular cartouche engraved with a monogram, the silver gilt interior stamped with Russian hallmarks and 84, probably Moscow, weight approx. 122g, 10cm x 5.5cm **£200 - £300**

- 175** An ornate set of four early 19th Century style hallmark silver Wine Labels, each cast with a central cherub's head flanked by 'C' scrolls and foliate repousse designs etc., two assayed Birmingham 1949, two assayed 1950, approx. 63g **£80 - £120**
- 176** A fine heavy mid 20th Century hallmarked silver, hinged Case, the outer body with engine turned decoration, the gilded interior marked for Asprey & Co., assayed Birmingham 1948, approx. 232gms **£100 - £150**
- 177** A George III style three piece, hallmark silver Tea Service comprising Tea Pot, two handled Sugar and Cream Jug, each of four ball feet, Chester hallmarks (dated various), total approx. weight including handle and knob finial 933g **£250 - £350**
- 178** A heavy hallmark silver Salver, piecrust edge and on three leaf cast feet, makers mark WFAF, assayed Sheffield 1912, approx. 30.5cm diameter, 809g **£200 - £300**
- 179** A good early 20th Century cut glass and silver mounted Lemonade Jug assayed London 1908, 25cm high **£120 - £150**



**Lot 180**

- 180** A large early 20th Century dome topped hallmarked silver Cigarette Case with engine turned decoration and flush hinge, makers mark A.W., assayed Birmingham 1913 **£150 - £200**
- 181** A heavy early 20th Century hallmarked silver Sauce Boat, cast border and each on circular feet, makers mark D.(S) Ltd., assayed Sheffield 1948 together with one other matching, probably silver plated example, hallmarked total approx. 165gms (2) **£50 - £80**
- 182** A pair of early 20th Century hallmarked silver Sweetmeat Dishes, reticulated and hammered bodies, each on three ball feet, assayed Birmingham 1900, each approx. 16cm diameter, approx. 244gms **£80 - £120**
- 183** A large early 20th Century silver framed, easel ladies Dressing Table Mirror, the pediment with repousse style flowers and husks in Adam style, with hand bevelled plate, assayed London 1910, 40cm high (highest point) x 29cm wide (widest point) **£300 - £400**

- 184** A pair of mid 20th Century circular, hallmarked silver Coasters, assayed Sheffield 1949, each approx. 14cm diameter, approx. total weight 298gms **£90 - £120**
- 185** A hallmarked silver, circular Coaster, beaded cast border and with Sheffield assay marks (rubbed), 14.5cm diameter, approx. 127gms **£40 - £60**
- 186** A hallmarked silver Cigarette Case with engine turned decoration, approx. 182gms **£40 - £60**
- 187** A large late 19th Century silver framed, easel style ladies Dressing Table Mirror, the pediment with a central basket of fruit flanked by "green man" style masks and leviathans and strap work etc., the cartouche engraved with a monogram, the frame assayed London 1887, 62cm x 46cm **£600 - £800**
- 188** A heavy circular silver Salver, thread border and three stepped feet, assayed London 1944, 25.5cm, weight approx. 654gms **£200 - £250**
- 189** A heavy pair of Georgian style, hallmarked silver Sauce Boats, each with scroll handle and each with hoofed shaped feet, together with two matching stands, approx. 1055gms (4) **£350 - £450**
- 195** Ten silver Soup Spoons with stylized anthemion finial and four matching Table Spoons, Sheffield 1949, makers mark D.(S) Ltd., approx. 1036gms **£400 - £500**
- 196** A pair of silver Old English pattern Sugar Tongs, together with a pair of Salad Servers, a pair of Sauce Ladles and six silver Coffee Spoons (one not matching), approx. 345gms **£150 - £200**
- 197** A pair of silver Georgian monogrammed Sugar Nips (A/F) **£50 - £70**
- 198** A pair of silver Sauce Boats of Georgian design with 'C' scroll handles on hoof shaped feet together with the stands for the same, Sheffield 1949, approx. 559gms **£220 - £280**
- 199** A plain silver rectangular, flat handled Tray, Sheffield 1948, 47cm wide, 31oz, approx. 1207gms **£400 - £500**
- 200** Two 19th Century silver plated Wine Funnels, one circular example with a gadrooned edge decoration, one rounded rectangular example having moulded shell and gadrooned border (2) **£30 - £50**



**Lot 190**



**Lot 201**

- 190** A pair of silver pedestal Dishes with pierced decoration, grapes and vines, Sheffield 1948, 10.5cm diameter, approx. 1374gms **£600 - £800**
- 191** Sixteen silver Napkin Rings with gadrooned borders, Sheffield 1948, approx. 462gms **£200 - £250**
- 192** Two plain silver Ashtrays, Birmingham 1945, 9.5cm diameter, approx. 88gms (2) **£60 - £80**
- 193** A five piece silver Cruet with Spoons, Birmingham, 1942, approx. 212gms **£100 - £150**
- 194** A silver Mustard Pot, Salt and matching Pepper Pot, 1927 **£30 - £50**
- 201** An unusual 19th Century heavy novelty silver Table Lighter modelled as a Parakeet resting upon a branch, hinged head (as a lid) with push spring mechanism, makers mark possibly EHS, assayed London 1877, approx. 127gms (original finish), 9.5cm high **£200 - £300**
- 202** A late 18th/early 19th Century hallmarked silver presentation circular Vase decorated with swags and patera in Robert Adam style, raised on three spherical feet, inscribed "Presented to Mr Bowles by Sir Bache Cunard "Dignity", dated 1880, makers mark rubbed, assayed London, approx. 223gms **£80 - £120**



- 203** A 19th Century hallmarked silver Christening style Cup engraved with foliate style decoration, of four sided baluster form and with scrolling handle, assayed Birmingham 1855, 12cm high, approx. 150gms  
**£80 - £120**
- 204** A cased set of twelve Danish style silver plated Coffee Spoons, each with hand planished handle **£30 - £50**
- 205** An early 20th Century silver plated Continental Desk Set comprising Stand with cut glass Inkwell, Paper Knife, circular tapering Seal, a pair of Candlesticks and a Desk Blotter, each bearing monogram (7) **£70 - £100**
- 206** An early 20th Century novelty silver Table Lighter in the form of a lighthouse by Ernest Wilfred Saunders and Henry Arthur Mackenzie (1911 - 1973), makers mark S & M, Pat. No. 373219, Hallmark Birmingham 1932, 19.5cm high (max) Sold on behalf of the Charity Helen and Douglas House providing hospice care for children and young adults - [www.helenanddouglas.org.uk](http://www.helenanddouglas.org.uk), *illustrated inside front cover* **£1000 - £1500**
- 207** A good late 19th Century four piece, silver plated Tea and Coffee Service on conforming rococo style silver plated Tray with cast feet **£100 - £150**



**Lot 208**

- 208** Edward VII, Sheffield c1909 Silver Longhurst Trophy Cup and Cover presented by Sir Henry Bell Longhurst C.V.O, approx 696 grams, Height 20cm. Provenance included: Property of an Hon. Lady directly associated with Queen Alexandra. **£250 - £350**

## JEWELLERY

- 209** Three 20th century Chinese carved Jade Pendants depicting Dragons (3). **£30 - £50**
- 210** Chinese Jade eight Turtle Bracelet and an Amethyst pendant carved as a Peach (A/F) (2). **£30 - £50**
- 211** Pair of early 20th century Chinese Jade earrings, the reticulated barrel shaped body mounted with hand carved jade beads suspended on silver gilt wires stamped 925, Jade plus beads Height 3.5cm. **£30 - £50**
- 212** A pair of early 20th Century Art Deco period carved Jade Earrings, total length including wires 5.5cm **£50 - £70**
- 213** A fine quality 9 carat rose gold double Albert Chain **£600 - £800**
- 214** A 9 carat gold Claddagh Ring set with a small diamond **£30 - £50**
- 215** An 18 carat white gold ladies French jet and diamond cluster Ring **£250 - £300**
- 216** A gentleman's 9 carat white gold Ring set with six black diamonds **£180 - £220**
- 217** An 18 carat gold and platinum three stone diamond ladies Ring **£100 - £150**
- 218** A gentleman's 18 carat gold Ring set with nine diamonds **£250 - £300**
- 219** A gentleman's heavy 18 carat gold Ring set with 16 diamonds **£300 - £400**
- 220** A 9 carat gold Masonic Ball together with a 9 carat Chain **£200 - £300**
- 221** A 9 carat gold and topaz Pendant together with a 9 carat Chain **£80 - £120**
- 222** A 9 carat gold ladies Ring set with a moonstone **£60 - £90**
- 223** A superb quality 18 carat gold Ring set with diamonds, approx. 1 carat **£450 - £550**
- 224** A ladies 9 carat gold diamond daisy Cluster Ring **£80 - £120**
- 225** A fine 9 carat gold Cameo Bar Brooch **£80 - £120**
- 226** A platinum and diamond Cocktail Watch on a white gold Bracelet **£330 - £380**
- 227** A 14 carat gold ladies Bracelet with curved links **£500 - £600**
- 228** A very heavy silver Charm Bracelet **£80 - £120**
- 229** A cased pair of 18 carat gold Cufflinks by Asprey's **£500 - £700**
- 230** A 14 carat gold Necklace set with over 700 diamonds (approx. 10 carat) **£1600 - £1800**
- 231** A boxed 9 carat rose gold floral engraved Bangle **£100 - £150**



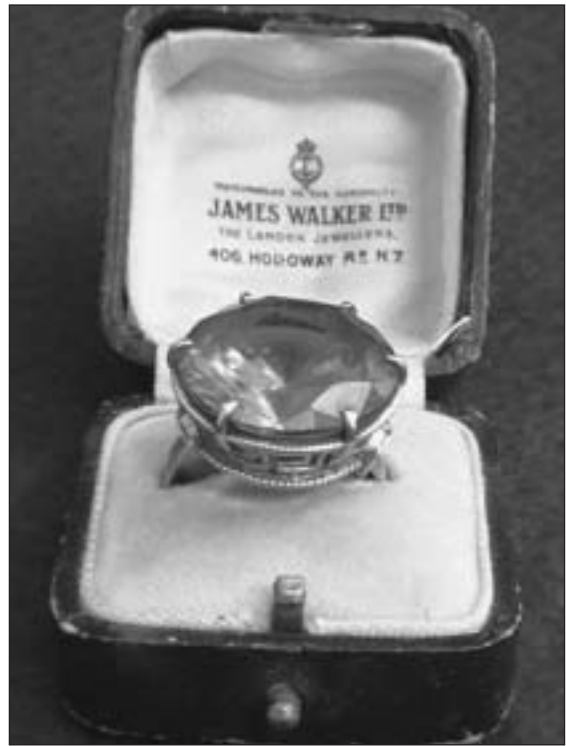
**Lot 240**



**Lot 248**

- 232** A heavy 14 carat gold Ring set with seven fine diamonds **£200 - £250**
- 233** A 9 carat rose gold Charm Bracelet set Watch Fobs etc., **£900 - £1100**
- 234** A single strand lustre Pearl Necklace **£50 - £80**
- 235** A 19th Century yellow metal Crucifix Pendant set with hand cut, yellow oval stones (possibly citrines) and four seed pearls (one missing), 5.5cm high **£40 - £60**
- 236** A small selection of Jewellery including an Art Deco style Stick Pin, one further earlier example, two small Bracelets (one 9 carat gold), a 14 carat yellow gold Stick Pin centrally set with a coral bead and other small Jewellery etc. (9) **£40 - £60**
- 237** A diamond set single stone Ring consisting of an emerald cut diamond, measuring 5.89mm x 4.32mm, depth 3.1mm, four claw set to white setting, tapering shoulders, heavy court shaped cross sectioned shank, hallmarked 950 grade platinum Birmingham Convention (Dom), calculated diamond weight 0.75 metric carat, colour D, clarity VS1, NRV gross item weight 3.38gms **£2800 - £3200**
- 238** A collection of silver jewellery to include a five bar link Bracelet with heart clasp, RAF Sweetheart Brooch, Buckle Ring etc., Total approx 29.7g **£20 - £40**
- 239** Two 9ct Gold Ladies Dress Rings and a Yellow Metal Ladies Dress Ring, all set with claw set cut coloured stones (3) **£50 - £80**
- 240** A collection of 9ct Gold and Yellow Metal Jewellery etc. to include a Gentleman's Signet Ring, a floral Engraved Crucifix and Ladies Bar Brooches., approx 16.4g (Hallmarked). **£140 - £180**
- 241** Gentleman's 9ct Gold Bracelet the square link bracelet decorated with a bark finish, c1970's, the clasp stamped .375, approx 43.4g **£400 - £600**
- 242** An unusual red amber Necklace, the graduated beads of cylindrical section, with hallmarked silver clasp **£100 - £150**
- 243** A pair of early 20th Century yellow metal jewel set Pendants, each set with cabochon semi-precious stones and each having a chain suspended, similar smaller jewel set Pendant (2) **£50 - £75**
- 244** An early 20th Century string of graduated green Jade Beads, 34cm long **£100 - £150**
- 245** A yellow metal child's Bracelet set with green Jade oval cabochon, the central stone flanked by two smaller stones and having a curb linked bracelet, 16cm long **£100 - £150**
- 246** A collection of semi precious stone Bead Necklaces to include Jadeite, garnets and agates (6) **£50 - £100**
- 247** A 20th Century Chinese cream silk Mandarin Shirt with green Jadeite buttons (one missing), together with a matching long Skirt, both embroidered with flowering prunus and floral borders (2) **£80 - £120**
- 248** A ladies cased good 18 carat yellow gold Ring centrally set with a table cut emerald flanked by ten smaller diamonds in a flower head design (the claw set mount probably platinum) **£250 - £400**
- 249** A cased set of early 20th Century gentleman's nine carat gold mother of pearl and sapphire set Dress Studs and Cufflinks retailed by Turnbull & Asser, London SW **£80 - £120**
- 250** An early 20th Century ladies three strand, coral bead Choker having a nine carat gold white clasp set with a single sapphire (stamped 9ct) together with a single strand graduated, bead coral Necklace (2) **£200 - £300**

- 251 A set of four early 20th Century ladies nine carat gold mounted, green jade Buttons of large cabochon form contained within a blue leather, gilt tooled, rectangular, fitted case **£60 - £80**
- 252 A ladies designer late 20th Century yellow metal Dress Ring centrally set with a hand cut marquis shaped amethyst, the tapering ring with bark effect outer **£100 - £150**
- 253 A heavy rose gold Wedding Band, approx. 5.5g, within heart shaped case **£70 - £100**
- 254 A ladies cased sterling silver Brooch modelled as a large flower head and bows etc., together with a pair of matching clip on Earrings, each set with marcasites **£40 - £60**
- 255 A ladies cased faux amethyst and diamond Necklace modelled as bows and ovals etc., **£250 - £400**
- 256 A ladies cased white metal (possibly white gold) Dress Ring centrally set with a large hand cut oval amethyst and surrounded by two rows of approximately fifty diamonds, total gross weight approx. 10g **£500 - £700**
- 257 A ladies late 19th/early 20th Century yellow metal Ring set with a band of five diamonds within engraved claw set mounts, within heart shaped box **£200 - £300**
- 258 A ladies boxed fine quality yellow metal Brooch (with chain), centrally set with a large hand cut amethyst and surrounded by diamonds modelled as flowers and leaves etc. (approx. 60 diamonds) **£700 - £1000**
- 259 A ladies yellow metal (marked 750) Dress Ring centrally set with a large round cut topaz (large spread and depth), set within cross frame style claw setting **£300 - £400**
- 260 The matching pair of ladies pierced Earrings each set with a large oval hand cut stone **£150 - £180**
- 261 An early 20th Century yellow metal (probably gold) and enamel RAF Sweetheart Brooch, the central RAF motif surmounted with a Crown and with green enamel wreath, flanked by two open wings set with small old cut diamond chips, together with one other larger silver Sweetheart Brooch bearing the arms of the Army Ordnance Corps (2) **£150 - £200**
- 262 A ladies Brooch modelled as a central flower head and with five drop suspensions, together with a pair of similar Earrings and one further pair of Art Deco style suspension Earrings (small selection) **£30 - £50**
- 263 A pair of Gentleman's 9ct Gold Oval Cufflinks Hallmarked Chester 1930 and stamped 375, approx 8g (2) **£70 - £90**
- 264 Early 20th century Egyptian Revival yellow metal ladies knotted rope link necklace, set with cabochon garnet drops, later safety chain (A/F repairs) **£200 - £300**
- 265 20th century ladies yellow metal bangle, the hollow cross form links tested as 14ct gold (A/F holed). **£100 - £150**



#### Lot 266

- 266 Ladies yellow metal and circular bright cut blue topaz dress ring, with Greek key pattern claw set mount, marked 18K, boxed **£80 - £120**
- 267 19th century ladies emerald cut Amethyst and Seed Pearl dress ring, stamped K10, boxed (A/F pearl missing) **£60 - £90**
- 268 A George III period yellow metal backed, navette shaped Brooch, the central seed pearl in an eight point star design against a dark blue enamel ground surrounded by a further pearl border **£80 - £120**
- 269 A pair of ladies yellow gold Earrings for pierced ears, each set with a star shaped amethyst together with a small oval, yellow metal Pendant similarly set with a smaller stone below two leaves (2) **£150 - £200**
- 270 A ladies cased 18 carat yellow gold Art Deco style Ring, central lozenge shaped emerald surrounded by eight smaller diamond chips set into white metal **£100 - £150**
- 271 Early 20th century 18ct and 15ct Gold (stamped), Diamond and Seed Pearl Golf Brooch along with a late 19th century yellow metal floral brooch (2) **£100 - £150**
- 272 A nine carat yellow gold Tiepin together with a circular golfing Trophy Pendant and nine carat Chain (2), approx. 11gms **£80 - £120**
- 273 A pair of ladies circular yellow metal (marked 750) Earrings for pierced ears, approx. 10gms **£150 - £200**
- 274 A heavy 18 carat gold Signet Ring (engraved LM) within a heart shaped presentation box, approx. 3.9gms together with one other boxed 22 carat yellow gold Wedding Band (2) **£120 - £150**



- 275 Late 19th century Victorian 9ct Gold and Garnet Parure comprising Pendant Necklace, Earrings, Circular Brooch, Crucifix and Dress Ring (later converted from a brooch) contained within a fitted demi lune red Morocco case (A/F later conversions and repairs).  
**£200 - £300**

- 276 A pair of early 20th Century mother of pearl and gilt metal ladies Opera Glasses signed "Asprey", makers mark "RT"  
**£60 - £80**

#### CLOCKS, WATCHES AND BAROMETERS

- 277 A Victorian 18 carat gold Fob Watch with engraved decoration  
**£180 - £220**

- 278 A Victorian silver Pocket Watch together with a Chain and Cigar Cutter  
**£140 - £180**

- 279 A Victorian silver Fob Watch, Albert and Fob  
**£80 - £120**

- 280 A good late 19th/early 20th Century French green onyx and gilt metal mounted, lyre shaped Mantel Clock, the surmount modelled as a Classical faced sunburst above a floral swag and further foliate style mounts flanking a white enamel dial with hand decorated floral garlands, Arabic numerals and signed etc., the gilded eight day French movement striking on a gong, 37cm high  
**£350 - £400**

- 281 An early 20th Century 900 grade Continental silver cased, open faced, keyless Pocket Watch, the gilded and silvered dial signed "Tavannes" with Roman numerals, the case engraved in high Art Nouveau style and the edge set with numerous hand cut small red stones, 4.5cm diameter  
**£50 - £80**

- 282 A 19th Century mahogany wheel Barometer, broken swan neck pediment with brass finial above various dials, the lower signed B Pedroncini, Leicester  
**£150 - £250**

- 283 A late 18th Century oak cased eight day Long Case Clock, the broken swan neck pediment surmounted with a brass open winged eagle above 13" brass dial having a chapter ring with Arabic numerals cornered by ornate pierced metal gilded spandrels of two cherubs holding crowns, subsidiary seconds dial, date dial and the main dial signed V Collinson, Kendal. 1797, the frieze below and trunk door with marquetry shells flanked by quadrant pilasters, raised on bracket feet, approx. 232cm high  
**£400 - £600**

- 284 An Edwardian mahogany cased, broken arch, eight day Grandmother Clock, the brass dial and chapter ring with Roman numerals above a glazed aperture, on bracket feet  
**£200 - £300**

- 285 A George III period oak cased, eight day Long Case Clock, the 12" brass dial with silver chapter ring having Roman numerals and cornered by ornately pierced gilt metal spandrels, the dial also with moon phase mechanism, date aperture and signed Eli Stancliffe and flanked by two columns, raised on plinth base, 188cm high  
**£300 - £500**



Lot 283 (detail)

- 286 A late 19th Century ladies silver gilt and fine blue enamel fob Watch, white enamel dial with gilded Roman numerals within blue enamel colour, the seventeen jewel movement numbered 1601, the back also enamelled and decorated with Queen Victoria's shoulder length profile (old head) (some losses to enamel)  
**£100 - £150**

- 287 An eight day carriage style, gilt metal and glass sided Mantel Clock, the engraved silvered dial signed Mappin & Webb Limited, silvered chapter ring with Roman numerals and the gilded French escapement and movement striking on a bell, 22cm high  
**£100 - £150**

- 288 A late 18th Century provincial Oak Longcase Clock, the broken swan neck pediment above a brass dial signed Thos Lawson, Keithley having black Roman numerals, moon phase, calendar and ornate steel hands cornered by pierced ornate spandrels. Flanked by gilt metal mounted fluted pilasters over a shaped dome top trunk door with brass escutcheon again flanked by fluted quartered pilasters, the panel base supported on chamfered stile feet, 213cms high x 47.5cms wide  
**£300 - £500**

- 289** An early 19th Century Banjo Barometer, the circular silvered dial engraved with a central wreath, damp / dry dial, thermometer and circular convex mirror, hand painted case A/F, 102cms high x 30cms wide (max)  
**£100 - £150**
- 290** A ladies 18 carat yellow gold, cased Dress Watch, the gold dial signed Tissot and with baton markers, the seventeen jewel movement also signed (and numbered), weight of integral bracelet (together with glass) and case back (minus movement) approx. 35g **£250 - £400**
- 291** A gentlemen's mid 20th Century nine carat yellow gold cased Wristwatch, the mother of pearl style dial signed "Accurist" and with baton markers, with 21 jewel movement, approx. gross weight (including glass movement etc.), 53g **£300 - £400**
- 292** A gentleman's 18 carat yellow gold cased, late 19th/early 20th Century, keyless half Hunter Fob Watch, the front case with blue enamel Roman numerals and aperture, the white dial with similar Roman numerals and subsidiary seconds hand, the movement numbered 10414, with internal presentation inscription and the back of the case engraved with armorial crest with Latin legend **£400 - £600**
- 293** An early 20th Century gentleman's keyless open faced, gold plated cased Pocket Watch, white enamel dial with Roman numerals and subsidiary seconds hand, the fifteen jewelled movement signed Waltham, the internal case with presentation inscription, dated 1904, complete with hanging clip **£70 - £100**



**Lot 294**

- 294** A very fine 18 carat yellow gold cased, open faced gentleman's Fob Watch, the textured gold dial with Roman numerals and subsidiary seconds dial, all bordered by an ornate stylized garland of flowers, the gilded movement (with fusee) signed Alexander, London and numbered 205 (4?), the gold case with Sheffield assay marks and embossed floral design in relief to the outer edge, the back with engine turned decoration and central vacant circular cartouche  
**£700 - £1000**
- 295** An early 20th Century onyx and ormolu mounted Mantel Clock in late 18th Century style, silvered chapter ring with Roman numerals, on four scrolling feet **£100 - £150**



**Lot 296 (detail)**

- 296** A mahogany Longcase Clock of narrow proportions and 17th Century design, the bell top with turned finials and turned pillars to the sides, the top inlaid with a bird, flowers and foliage to the door, fitted brass dial with silvered chapter ring and Tempus Fugit roundel to the arch, having an eight day movement and inscriptions to the dial base, dial and case made in England, movement made in France **£600 - £800**
- 297** A late 19th Century gilt brass Carriage Alarm Clock with spiral columns with Corinthian capitals, the rectangular white enamel dial signed Muirhead and Son, Glasgow, having an eight day repeat movement, striking on a gong, 20cm high **£350 - £450**
- 298** A walnut Bracket Clock of late 17th Century design, with carrying handle to the cushion top, a square brass dial with silvered chapter ring and having an eight day movement striking on five gongs, 35.25cm high, by Asprey **£350 - £400**



Lot 299

- 299 An Edwardian silver and tortoiseshell mounted miniature Carriage Clock having white enamel circular dial, eight day movement and the case bearing London hallmarks for 1901, 10cm high **£350 - £450**

- 300 A Regency rosewood Bracket Clock, the octagonal case with handle to the top and ring handles to the sides, brass floral and foliate decoration and fitted with a white enamel dial and Roman numerals, the base fitted with a drawer and brass inlaid front, on ball feet (converted quartz movement), 52cm high **£380 - £450**
- 301 A gilt brass Carriage Clock with rectangular white enamel dial having Roman numerals, fitted with an eight day striking movement, 17cm high **£150 - £200**
- 302 A late 19th Century gilt brass and tortoiseshell mounted, miniature Carriage Clock with circular white enamel dial and eight day movement, 10cm high **£140 - £180**
- 303 A gentleman's 18 carat yellow gold cased (marked 18k/750) Zenith modern designer Wristwatch, the 17 jewelled movement signed Zenith and the mat black dial with applied gold circular baton marker at the 12 o'clock position, leather strap **£250 - £400**
- 304 A heavy 18 carat yellow gold cased (marked 750) gentleman's Cartier Tank Watch, automatic movement, water resistant, and the square mat textured white dial signed Cartier and with Roman numerals and date aperture to the 6 o'clock position, the screw down back numbered 582319CD, the crown with blue cabochon stone (probably sapphire), with original accompanying folder containing original paperwork (purchased 21st December 2001) **£1500 - £2500**
- 305 A cased Chinese Watch "Shanghai Tang", circa 1994 and with black leather strap, the dial depicting Chairman Mao with a waving right hand against a red ground and with circular baton markers, together with one other gold plated cased example, multi-dial against a white ground with Roman numerals (2 watches one cased) **£80 - £120**



Lot 304





**Lot 306 (detail)**

- 306** A late 18th Century oak Long Case Clock, the moulded pediment above an arched glazed door enclosing a silvered dial with strike silent dial and subsidiary seconds dial, Roman numerals and date aperture, signed James Tregent, London, the hood door with integral pilasters above a plain rectangular trunk having a shaped trunk door and square base (A/F), 218cm high x 53cm wide (max) **£500 - £700**

**OBJETS D'ART, WORKS OF ART  
AND BIJOUTERIE**

*(including Asian and Oriental)*

- 307** A 20th Century hand carved red and black Chinese soapstone Dragon carved with a scaled body, 23cm x 13cm **£250 - £350**
- 308** A 20th Century Asian boulder Carving, the hand carved and polished natural form green stone depicting Lord Buddha seated on a lotus, 10.5cm x 9.5cm **£200 - £300**
- 309** 20th century Chinese Jadeite Qulin, the well carved mythical beast amongst stylized clouds, approx. 14cm x 9cm **£200 - £300**



**Lot 312**

- 310** Antique Chinese translucent White Jade Pendant with minor russet edge inclusions, well carved, pierced and decorated with a jardinière containing flowers. Complete with silk suspension cord with Chinese knots and a Jadeite bead, the lower cord having two silk tassels, approx. 6cms x 6cms. **£50 - £80**
- 311** An 18th Century Chinese Qing period hand carved wooden deity seated in traditional dress, monochrome decoration, Height 19cms. **£100 - £200**
- 312** Antique Chinese Spinach Jade Pendant (Dates Ming - Qing Dynasty) inscribed "Fu ru Donghai" [Wish your] fortune [as immense] as the East Sea and "Shou bi Nanshan" [Wish your] life [as long-lasting] as the South Mount. 7cms x 5cms. **£300 - £500**
- 313** An early 20th Century Chinese apple green Jade Frog, the small well carved frog having incised low relief eyes (A/F chips to feet), 5cm x 4cm **£30 - £50**
- 314** 19th century Japanese Tortoiseshell and gilt lacquer Cigar Box decorated with an oriental lady collecting blossom and exotic birds verso, signed, 13cm x 7cm. **£150 - £200**
- 315** Chinese carved green hardstone recumbent Water Buffalo, Length 7cms **£30 - £50**



**Lot 314**



**Lot 316**

- 323** An early 20th Century Japanese bone Okimono of a Terrapin Basket, good colour and patina, 4.8cm x 5cm **£80 - £120**
- 324** A mid 20th Century Japanese bone Okimono of a Bundle of Bamboo, 5.5cm x 5cm **£50 - £80**
- 325** A large antique apple green and celadon Jade Plaque carved with a pig amongst lotus and seed pods, incised verso, 14cm x 9.5cm **£60 - £100**
- 326** A Chinese nine piece carved stone Amulet decorated with dragons and archaic symbols, 17cm long **£30 - £50**
- 327** An early 20th Century naive Japanese bone carving of The Three Wise Monkeys together with a 20th Century "Kogai" Japanese Hair Ornament (2) **£60 - £80**
- 328** A 20th Century Chinese reticulated bone Scent Bottle Holder with screw top, 10cm high **£40 - £60**
- 329** An 18th Century Italian style metal and enamel Sauce/Pap Boat, scrolling handle headed with a Nubian style mask, the interior and exterior decorated in bright enamels with scenes of cherubic revelry etc., 12cm wide (including handle) **£150 - £180**

- 316** Qing Dynasty Chinese pale celadon "Zigang Plaque" with low relief carving depicting figures under a tree the verso carved with Chinese characters in script (xing shu) and signed in veneration of the Ming Jade carver Lu Zigang. 6cms x 4cm. **£300 - £450**
- 317** An early 20th Century Chinese carved Walnut depicting the "Thousand Face" decoration, good colour and patina, 5cm x 4cm **£60 - £80**
- 318** A 19th Century Japanese hardwood Netsuke of a recumbent Water Buffalo (possibly Tokyo School), signed to base, good colour and patina, 4.5cm x 3cm **£150 - £250**
- 319** A 19th Century Japanese carved white hardstone Netsuke of a reclining man with a pipe, signed to base, 4.5cm x 3.5cm **£100 - £200**
- 320** An 19th Century gilt Bronze Figure of a Chinese Lohan playing with a Shi Shi on a rocky outcrop, unsigned, 8cm x 8cm (max), *illustrated front cover* **£250 - £350**
- 321** An 18th Century (possibly earlier) Chinese carved bone standing Official Figure, 11.5cm high **£200 - £300**
- 322** An early 20th Century Indian carved ivory Lion Capital of Ashoka, decorated with a lion, elephant and a gazelle, originally placed atop the Aæoka pillar at Sarnath, now in the state of Uttar Pradesh, India by Emperor Ashoka circa 250 BC, 9cm high **£60 - £80**



**Lot 330**

- 330** A late 19th/early 20th Century novelty Chinese Seal (unengraved), the finely carved ivory handle modelled as a Chinaman in the process of blowing a spider from his forehead, 5.25cm high **£250 - £350**



**Lot 331**

- |  |  |
|--|--|
| <p><b>331</b> An unusual early 20th Century boxed Propelling Pencil and Ink Pen Set modelled as a golf wedge and a golf wood, the wood marked SM &amp; Co. (for Samson Mordan &amp; Co.), length of wedge 18cm <b>£100 - £200</b></p> <p><b>332</b> A selection of Sewing implements and accoutrements (various) <b>£40 - £60</b></p> <p><b>333</b> A pair of early 20th Century rectangular Chinese natural brown granite stone Seals, both seals decorated with incised carved Karashishi temple guardians and stylized clouds, with carved Chinese character marks to base (3) <b>£150 - £250</b></p> <p><b>334</b> An early 20th Century Chinese Republican period rectangular cased Seal, the top decorated with a dragon amongst clouds opening to reveal a rectangular engraved and inlaid boxwood seal and red ink block, 8cm long <b>£80 - £120</b></p> <p><b>335</b> An early 20th Century Chinese oval black papier mache Table Snuff Box, the lid decorated with two carved ivory immortals amongst stylized clouds, 11cm x 8.5cm <b>£100 - £150</b></p> <p><b>336</b> Two early 20th Century Chinese ladies silk Evening Purses, the first decorated with pine trees and having a carved ivory mythical beast clasp, the second decorated with chrysanthemums with gilt metal mounts inset with Jadeite and coral cabouchons and a central jade ornament carved as a phoenix (2) <b>£100 - £200</b></p> | <p><b>337</b> An early 20th Century Chinese hardwood Stand modelled as a Ming Period piece of furniture, the square top inset with a burr wood panel, supported on fluted square legs, united with shaped and fluted stretchers, 22cm high x 11.5cm wide <b>£100 - £200</b></p> <p><b>338</b> A 20th Century China Hong Kong One Dollar dated 1902 depicting standing Britannia verso decorated with Chinese symbols and calligraphic script <b>£40 - £60</b></p> <p><b>339</b> A 20th Century Chinese hardwood rectangular Box with moulded corners and pale green Jade lid carved with Taoistic symbols, 12cm long x 4.5cm high <b>£200 - £300</b></p> <p><b>340</b> An interesting pair of late 19th/early 20th Century carved ivory Japanese Netsuke, each God with long flowing hair, flowing robes, fans and with revolving faces (one as a mortal, the other as a God), approx 5cm high <b>£200 - £300</b></p> <p><b>341</b> A carved Japanese ivory Netsuke (probably early 20th Century), modelled as a standing bearded figure with staff, two character signature to underside, 5cm high <b>£50 - £70</b></p> <p><b>342</b> A heavy cast silver Brooch, a male head in profile wearing a laurel wreath and with the motto "Duris Non Frangor" (I am not disheartened by difficulties) (Muir family motto, Scotland), assayed Glasgow 1937, approx. 35gms <b>£40 - £60</b></p> <p><b>343</b> A 19th Century Chinese rock crystal Snuff Bottle and white metal mounted semi elliptical cover, hand carved with prunus blossom and stylized lotus, 7cm high <b>£30 - £50</b></p> |
|--|--|



**Lot 339**





**Lot 347**

- 344** A large mid 20th Century oval form, Dunhill onyx and gilt metal Table Lighter (signed) **£200 - £300**
- 345** A nine carat gold Cigarette Case with engine turned decoration, approx. 185gms **£1500 - £1800**
- 346** A selection of six 19th Century silver Crowns, three late George III (dated 1819), three Victorian (dated 1889, 1890 and 1897) **£0 - £0**
- 347** A Chinese jade Ewer of flattened form (Qianlong period), handle carved as a mythical beast's head, the body with a raised band of carving in low relief depicting four open mouthed dragons, the stone of a greenish white tone and with some russet inclusions, 12cm long x 3cm high **£700 - £1000**
- 348** A pair of early 19th Century carved mahogany Candlesticks, the cast bronze drip pans and sconces above a turned fluted stem with wythern decoration on a turned circular base, 44cm high (one A/F) **£60 - £80**
- 349** An antique Chinese carpenters hand painted wooden "Line Marker" decorated with carved Dragon's head, the sides also carved with Karashishi, 28.5cm long **£120 - £180**
- 350** A 20th Century Chinese scholars tin Writing Box, the lid having gilt Chinese character marks together with two circular carved jade Pendants (3) **£30 - £50**
- 351** A pair of antique hand carved Chinese red lacquer and gilt wood Panels depicting birds amongst pine tree, willow and lingzhi fungus, approximately 34cm x 20cm (A/F) (2) **£80 - £120**
- 352** Antique hand carved White Marble Indian Chakla (Indian Chapati Board), the underside carved with concentric circles and supported on three legs, Diameter 28cms. **£50 - £80**



**Lot 353**

- 353** Very fine early 20th century embroidered Black Ground Chinese Jacket with Pale Blue lining, elaborately worked in satin stitch and couched gold and silver threads with multi-coloured floral roundels, Dragon ties etc. above a dense ground of lower couched gold and silver thread wave borders (A/F). **£300 - £500**
- 354** A fine 20th century Chinese traditional Wedding Skirt, the bright red and navy blue panels finely embroidered with floral Gold and Silver thread. **£150 - £250**
- 355** Attributed to Robert Berks (American b1922), "Bust of an American Gentleman", terracotta and bronze, inscribed indistinctly verso, 29cm high **£100 - £150**



Lot 356

- 356** Substantial Kalamasch style 19th century German Meerschaum Pipe carved with noblemen on horseback above an armorial device and having white metal mounts stamped with the makers mark "JK", Height of bowl 15cm, Length of bowl 13cm (Total Length approx 40cm). **£200 - £300**
- 357** 19th century Arts and Crafts Copper Chamber Stick in the manner of John Pearson, Newlyn School, original dark patination with hand hammered finish, Height 29cm **£100 - £150**
- 358** A 19th Century Indonesian carved Box for the Chinese market, the top decorated with two figures in landscape surrounded by floral motifs, two further figures to the front within roundels, 25cm x 12cm x 12.5cm **£150 - £250**
- 359** A 19th Century Chinese Shibayama hardwood Panel inlaid with an ivory Incense Burner, mother of pearl and boxwood floral decoration and red lacquer furniture (A/F losses), 61cm x 37cm **£100 - £200**
- 360** Antique African hardwood Hand Cymbals, hand cut metal discs and hand carved grip frame with linear decoration, good colour and patination, 29cm long **£30 - £50**
- 361** A fine quality late 19th Century figured walnut, table top Cigar Cabinet, the broken swan neck pediment surmounted with three finials above a moulded top and single full width drawer below incised with foliate style decoration and retaining original gilt metal aesthetic handle, further over two panelled doors with finely painted (on leather) decoration of dancing couples in 18th Century dress, the doors opening to reveal two further half width interior drawers, shaped apron and raised on bracket feet, 46cm wide x 24cm deep x 58cm high (including pediment) **£300 - £400**
- 362** A large early 20th Century Chinese hardwood figural Carving, smiling figure carrying a lotus pod and flower (as a candlestick) and standing upon a pierced base, 41cm high **£40 - £60**
- 363** A fine early 20th Century German/Austrian boxwood Carving, single male figure with pipe carrying a wicker basket full of game, on plinth base, 28cm high (including plinth) **£40 - £60**
- 364** A very fine pair of 19th Century ivory enamel and gilt metal mounted cased Opera Glasses, the barrels finely decorated with floral sprays within cartouches against a green enamel ground **£160 - £180**
- 365** A Stamp Album containing World Stamps mostly from the beginning of the 20th Century etc., and including Gibraltar, South Africa, Cayman Islands, Gold Coast, Nyasaland, Bahamas, Australia, Ceylon, Nigeria, Belgium, Trinidad, St Lucia, Malaya, Tunis, Portugal, Pakistan, Monaco, Italy, India etc., a good selection **£60 - £90**
- 366** The Challenge Postage Stamp Album containing a good and varied selection of late 19th/early 20th Century Stamps from around the world including France, Free French Somalia and Equatorial Africa, French Congo, French Consular Offices, French Morocco, Andorra, Cameroon's, Benin, Gaboon, Guadeloupe, Indo-China, Madagascar, Martinique, Tunisia, New Caledonia etc. (selection) **£60 - £90**
- 367** An unusual hand made 19th/early 20th Century hand held Drum, the leather skin retaining some original stylized decoration, with turned wood hammer, 26cm diameter **£30 - £50**
- 368** A pair of late 18th/early 19th Century hand coloured, ebonised framed oval Portrait Miniature Engravings (one being Lady Gertrude Villiers), label verso (2), the male portrait probably of William Pitt, 13cm high (including frame), the female 12cm **£50 - £70**



**Lot 369**

- 369** A large Chinese carved wood Figural Sculpture, the high ranking male wearing oversized earrings and seated in a hoop back chair, the terminals modelled as open mouthed beasts with large incisors, in his right hand he holds a pearl of wisdom and his feet rest upon a wide low stool, most original pigment remaining, possibly Song or Tang Dynasty, 40cm high  
**£600 - £1000**



**Lot 375**

- 370** A rare late 18th Century hexagonal scroll work Tea Caddy, the hinged cover, above conforming interior lid with turned ivory handle, the main body with decorative scrolls and ornate gold wirework, 17.5cm diameter x 12cm high, *illustrated inside front cover*  
**£200 - £300**
- 371** An early 20th Century oak Smokers Cabinet, glazed door enclosing single drawer and Royal Doulton stoneware Tobacco Jar  
**£50 - £80**
- 372** A late 19th Century oak and brass mounted, three bottle Tantalus with side carrying handles and mounts in reformed Gothic style  
**£200 - £300**
- 373** Edward VII Gold Sovereign dated 1910, approx 7.98g.  
**£150 - £200**
- 374** Victorian Gold Half Sovereign dated 1892, approx 3.98g.  
**£80 - £120**
- 375** Victorian Gold Half Sovereign dated 1866, approx 3.94g.  
**£80 - £120**
- 376** George V gold Half Sovereign dated 1911, mounted in a Gentleman's 9 carat Gold Ring, approx (10.3g total weight).  
**£100 - £150**
- 377** A hardwood treen ethnic paddle possibly oceanic of small proportions having a woven a knotted handle and a hand painted spade shaped paddle, Length 73cm  
**£100 - £150**



**Lot 372**





**Lot 378**



**Lot 380**



**Lot 383**

- 378** 18th century Greek Icon on moulded decorated Pine panel depicting a winged angel clasping a scroll within a red painted border, approx. 15.5cm x 11.5cm  
**£300 - £400**
- 379** Early 20th century Asian chain stitch black velvet Tea Cosy decorated with birds and floral borders.  
**£30 - £50**
- 380** Early 20th Century mahogany cased model of a Sea Going Macao (LAPPA) Fishing Junk, presented by R.F.C. Hedgeland, late Commissioner, Chinese Customs Service, the glazed frame dimensions 69cm wide x 28cm deep x 76cm high  
**£300 - £500**
- 381** 19th century map of Scotland published by Lange v. Ferro, later framed and glazed (previously folded).  
**£40 - £60**
- 382** Early 20th century album containing black and white photographs of Orientalist interest to include scenes from Tripoli, Algiers, Constantine, Gabes, etc. (album cover A/F)  
**£100 - £150**
- 383** A rare 19th Century ivory Walking Cane, the horizontal handle carved as a pouncing, open mouthed male Lion, the main tapering shaft carved as branch in traditional fashion, approx. 92cm tall (including handle)  
**£150 - £250**
- 384** A South Sea Islands style Coromandel/Calamander figural Carving, the kneeling female figure upon a stylized rocky base, 44cm high  
**£25 - £35**
- 385** A late 19th Century glass and silver mounted Spirit Flask, the removable oval cup assayed Birmingham 1894 (cup weight approximately 75gm), approximately 16cm high  
**£30 - £45**
- 386** An unusual patinated Folk Art Washing Dolly, hand carved and decorated throughout in naive style and dated 1900, 61cm  
**£80 - £120**

- 387 Two primitive Folk Art Plaques hand decorated, one depicting a striding cockerel, the other a fattened pig (2)  
**£140 - £160**
- 388 A large unusual and impressive antique Carving of an open mouthed fierce horned scaly Dragon, approx. 145cm high  
**£600 - £800**
- 389 A good 19th Century mahogany twelve drawer Collectors Cabinet, the two doors opening to reveal drawers and above four ogee bracket feet, 42cm wide  
**£800 - £1000**
- 390 An interesting 19th Century rhinoceros skin African Fighting Shield, 75cm high  
**£200 - £300**
- 391 An interesting 19th Century boxwood Carving of two Birds of Prey, one surmount with open wings onto stylized rocks, the other head turned and below, approx. 33cm high (some reparations)  
**£200 - £300**
- 392 An unusual pair of 19th Century (in mid 17th Century style) Pikes, each with turned ebonised staff, each approx. 248cm high  
**£200 - £300**
- 393 A 19th Century black bearskin Hussars Helmet with ostrich plume and gilt metal chain mail style and leather chin strap, 55cm high  
**£500 - £700**
- 394 A 19th Century red ochre carved folk art Model of a galloping horse with a cast iron head, 84cm long  
**£200 - £300**
- 395 A 1950's style glass and chrome Desk Stand with double inkwell and calendar etc.,  
**£50 - £70**
- 396 A set of gilt framed and glazed finely worked Japanese Silkworks, exotic birds amongst flowers and prunus blossom etc. (two works "signed"), each work approximately 33cm x 26cm  
**£150 - £250**
- 397 An Adam style antique red, variegated marble Lamp having applied gilded rams heads and swags in late 18th Century style, together with pleated silk Shade (damaged and badly re-glued)  
**£80 - £120**
- 398 An interesting early/mid 20th Century original cased Camera/Cigarette Lighter "Camera Lite" complete with original oil wrapped film etc., and instructional booklet etc., together with an uncased Ensign Midget Camera and a cased Ronson Pencil/Lighter (3)  
**£50 - £70**
- 399 A 17th/18th Century Chinese Carving of a high ranking dignity seated upon a hoop back chair, losses, damage and retaining some original pigmentation., 21cm high  
**£80 - £120**
- 400 20th century Chinese Wedding Skirt comprising of two decorative panels, the pink silk ground with royal blue panels embroidered with Phoenix and Dragons in gold thread amongst multi coloured floral borders and Chinese characters (2).  
**£100 - £150**
- 401 A 20th century Oak framed Dinner Gong, the Gothic frame supporting a circular metal gong decorated with a stylized sun, Height 34cm.  
**£20 - £30**



**Lot 402**

- 402 An unusual electric standard lamp decorated with Sharks, modern, the frame constructed from tree branches, set with eleven painted casts of small sharks, height approx 213cm.  
*Provenance: The John Entwistle Collection, Sotheby's 13th May 2003, Lot 325. (sold with the original Sotheby's auction sale catalogue containing original Sotheby's invoice)*  
**£400 - £600**
- 403 An electric lamp with sharks, modern, with four painted casts of sharks fixed onto the tree branch frame, height approx. 102cm.  
*Provenance: The John Entwistle Collection, Sotheby's, 13th May 2003, Lot 326.*  
**£300 - £400**
- 404 A 19th Century Dieppe style carved ivory Figure of Christ in crucifix pose, Parisienne retailers label of Emile Bouasse to reverse, the ivory figure approx. 25.5cm  
**£150 - £250**
- 405 A 19th Century oval, shoulder length Portrait Miniature of a lady in bonnet and with frill ruff etc.,  
**£50 - £80**



**Lot 406**



**Lot 412**

- 406** A Japanese Meiji period ivory Carving, two figures trying desperately to escape from an octopus (apparently unsigned). 15cm high **£150 - £250**
- 407** A George III period circular Snuff Box, transfer decorated with a group of the Royal Family **£30 - £50**
- 408** A large 19th Century oval ivory Box and Cover, gilt metal mounted and with a central hand decorated (in enamels) oval vignette of a Classical style scene of a warrior with spear and (possibly Achilles) and a naked female with attendant cherub, the box edged with carved drunken cherubs in relief in various guises and frolicking etc. (some damage), 15cm wide **£70 - £100**
- 409** An interesting selection of eleven hand painted antique Decoy Ducks **£500 - £700**
- 410** A leather bound and gilt brass, three drawer 19th Century Telescope, signed Watkins & Hill, Charring Cross, London **£50 - £70**
- 411** An early 20th Century red Morocco bound Jewellery Box, the hinged interior opening to reveal gilt highlighted pull out tray, together with a pair of 19th Century carved ivory Glove Stretchers and one other similar period carved ivory Model of a stalking animal (3) **£50 - £70**
- 412** A 19th Century cased German Violin (with bow), tightly carved scroll, one piece maple back and darkly varnished front, bears internal paper label 'Schweitzer', length of neck 23.5cm, length of back (including button) approx. 36cm **£100 - £150**



**Lot 409**



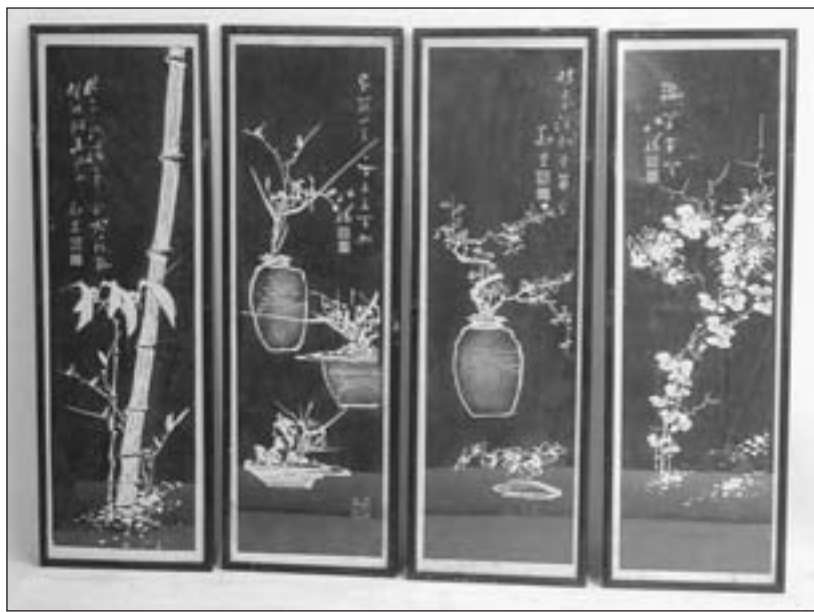


**Lot 413 (detail)**

- 419 A hand crafted scale Model of an Essex Wagon, 10” high x 32” long **£120 - £180**
- 420 A hand crafted Model of a Barrow Tree Transplanting Machine, 28” long x 11” high **£100 - £150**
- 421 A hand crafted scale model of an East Anglian Wagon, 9.5” high x 32” long **£120 - £180**
- 422 A hand crafted scale model of a Dorset Wagon, 8” high x 33” long **£120 - £180**
- 423 A hand crafted scale model of a Conestoga Wagon 1820 with working plans, 31” long x 14” high **£120 - £180**
- 424 A hand built scale model of a residential Barn Conversion, 1/12th scale, 30” high x 31” long x 25” wide **£150 - £200**

**PAINTINGS, PICTURES, LITHOGRAPHS  
AND ENGRAVINGS**

- 413 A 19th Century gentleman’s Cane, the circular lapis lazuli ball finial supported with a silver mount in the form of a crown, hallmark London 1888, makers mark “JK”, inscribed “H.L.C. Brassey, Preston Hall, June 30th 1894” **£80 - £100**
- 414 An early 20th Century gentleman’s novelty, bamboo Walking Cane, the handle modelled as a duck’s head with moving bill mechanism, the silver collar hallmarked London 1900 **£80 - £120**
- 415 A fine mid 19th Century Coromandel Travelling Dressing Case, the interior with various silver mounted cut glass requisite jars in a pull out tray revealing green gilt tooled leather dressing table tray, with gilt metal interior mounts, the lock marked S. Mordan & Co., London above a single full width base drawer containing leather writing slope and compartmentalised interior, *illustrated inside back cover* **£400 - £600**
- 416 Early 20th century Republic Of China Silver Dollar Yuan Memento, Lin Gwo Ming’s Catalogue # L&M 49 Sun Yat-Sen Dated 1912 released in 1927. This coin Commemorates the Birth of the Republic, plus a similar size Chinese Silver Coin depicting a Chinese Junk (2) **£40 - £60**
- 417 A collection of American Silver Coins to include 1886 Dollar, Half Dollar and Quarter Dollars etc. **£30 - £50**
- 418 A hand built scale working Model of a Pitstone Windmill with working plans, 63” high **£250 - £350**
- 425 \*Ethelbert White, ARWS (1891-1972) A scene from Diaghilev’s Ballets Russes Black outline print coloured by hand in watercolour and gouache Signed in the block 23.5cm x 19cm From Cyril Beaumont’s ‘Impressions of the Russian Ballet’, 1918-21, each of 40 copies. Beaumont was a renowned theatrical bookseller, critic and close friend of Diaghilev and the Ballets Russes. Most of the hand-colouring for booklets was the work of Beaumont and his wife, Alice, and it is possible that both were also involved in colouring the prints, although eventually other artists were employed on both projects. **£200 - £300**
- 426 \*Ethelbert White, ARWS (1891-1972) A scene from Diaghilev’s Ballets Russes Black outline print coloured by hand in watercolour and gouache Signed in the block 23.5cm x 19cm From Cyril Beaumont’s ‘Impressions of the Russian Ballet’, 1918-21, each of 40 copies. Beaumont was a renowned theatrical bookseller, critic and close friend of Diaghilev and the Ballets Russes. Most of the hand-colouring for booklets was the work of Beaumont and his wife, Alice, and it is possible that both were also involved in colouring the prints, although eventually other artists were employed on both projects. **£200 - £300**
- 427 \*Ethelbert White, ARWS (1891-1972) A scene from Diaghilev’s Ballets Russes Black outline print coloured by hand in watercolour and gouache Signed in the block 23.5cm x 19cm From Cyril Beaumont’s ‘Impressions of the Russian Ballet’, 1918-21, each of 40 copies. Beaumont was a renowned theatrical bookseller, critic and close friend of Diaghilev and the Ballets Russes. Most of the hand-colouring for booklets was the work of Beaumont and his wife, Alice, and it is possible that both were also involved in colouring the prints, although eventually other artists were employed on both projects. **£200 - £300**



**Lot 435**

- 428** \*Ethelbert White, ARWS (1891-1972) A scene from Diaghilev's Ballets Russes Black outline print coloured by hand in watercolour and gouache Signed in the block 23.5cm x 19cm From Cyril Beaumont's 'Impressions of the Russian Ballet', 1918-21, each of 40 copies. Beaumont was a renowned theatrical bookseller, critic and close friend of Diaghilev and the Ballets Russes. Most of the hand-colouring for booklets was the work of Beaumont and his wife, Alice, and it is possible that both were also involved in colouring the prints, although eventually other artists were employed on both projects. **£200 - £300**
- 429** \*Robert Furneaux Jordan (English Architect, Arts and Crafts Critic (The Red House, Phillip Webb for William Morris) and Book Illustrator, 1905 - 1978), Pen and Indian Ink Illustration for Hans Christian Andersen's "Nightingale", signed and dated 1972, 48cms x 33cms, **£150 - £250**
- 430** \*Robert Furneaux Jordan (English Architect, Arts and Crafts Critic (The Red House, Phillip Webb for William Morris) and Book Illustrator, 1905 - 1978), Pen and Indian Ink Illustration for Shakespeare's Macbeth. Act 1 Scene 1 "When shall we three meet again", signed and dated 1972, 27cms x 45cms, **£150 - £250**
- 431** A pair of 19th Century Oil on Canvas "Hunting Pony and Dogs in a Mountainous Landscape", both signed W Benzon, contained within quality swept gilt frames decorated with oak leaves and acorns, 39cm x 60cm (A/F canvas tears, for restoration) (2) **£150 - £250**
- 432** 19th century Kashmiri Lacquer Qalamdan (Pen Box), hand painted and gilded with birds amongst flowers, Length 31cm, Height 6cm (A/F). **£30 - £50**
- 433** 20th century Asian Linocut "Mongolian Warrior on Horseback", Hong Kong gallery label verso, Chinese frame with gilt metal mounts, 68cm x 44cm. **£40 - £60**
- 434** After Paul Sandby RA (1725 - 1809), two 18th century Aquatint's of Welsh landmarks as commissioned by Sir Joseph Banks "Part of the remains of Llamphor, near Pembroke" and "Manerbawr Castle (from the inward court)", Oak framed and glazed, 22cm x 30cm, **£30 - £50**
- 435** A set of four early 20th Century Chinese monochrome Stone Rubbings depicting the four seasons, each with script and seal marks, framed and glazed, 105cm x 30.5cm (4) **£100 - £200**
- 436** \*Olwen Eden-Sewell (British 20th Century), "Holocaust", mixed media, Royal West of England Academy label verso, 58cm x 48cm **£150 - £230**



**Lot 436**



**Lot 439**

**437** \*Seigfried Hahn (1914 - 2008) "Italian Street Scene", Oil on Board, signed Seigfried Hahn, gilt framed, 45.5cm x 64.5cm **£200 - £300**

**438** \*Arthur Edward Davies RBA, RCA (1893 - 1989) "Much Wenlock Priory" (Shropshire, United Kingdom), Watercolour, Pen and Ink, signed and dated 1944, framed and glazed, 27.5cm x 37.5cm. **£50 - £80**

**439** Adolphe Monticelli (1824-1886), Oil on Board, "Les trois cheveux Camargue panneau no.57", exhibition label verso, signed lower right, 36cm x 48cm. *Monticelli was much admired by Van Gogh who collected Monticelli works of art.* **£2500 - £3000**

**440** \*A framed and glazed Watercolour "Winter Marsh" by Neil Canning, signed N Canning to lower right, 58cm x 46cm **£200 - £300**

**441** A good decorative pair of framed and glazed (later) hand coloured Engravings "Oiseaux", "Der Dolpel" (Tab. LXXIV), "Der Americamiche Pelican" (Tab. LXII) each engraved by M Catesby and hand coloured by Jean Michel Seligmann (dated 1771), each image approx. 31cm x 22.5cm (labels verso) **£300 - £500**

**442** A Hogarth framed and glazed 16th/17th Century Engraving (after Rubens) "Francoise de Medicis Grand Duc de Toscane", 50cm x 29cm **£30 - £50**

**443** An unframed Oil on Canvas countryside Study (unfinished), originally from the Studio Sale of Peter Beigel, titled verso in pencil "The Spring of The Year (Mares and Foals at The Sandley Stud), 41cm x 51cm **£50 - £80**

**444** An unframed Oil on Canvas countryside Study (unfinished), originally from the Studio Sale of Peter Beigel, 46cm x 61cm **£50 - £80**



**Part Lot 441 (pair)**





**Lot 445**

- 445** After Joseph Mallord William Turner RA (23rd April 1775 - 19th December 1851), a gilt framed and glazed Watercolour Sketch, sunset lakeland scene with a single vessel, original hand written paper label verso with reference to Turner), 12.5cm x 17.5cm  
**£100 - £200**
- 446** A gilt framed Oil on Canvas (lined) Study of an Edwardian style lady with parasol viewing swans, signed lower right J E Bailey, 44cm x 59cm  
**£150 - £250**
- 447** A gilt framed Oil on Canvas Study, riverside scene, boating, a large Church to the background and cattle watering to the foreground, signed lower left Henry Harris (lined) (some crazing to surface), 34.5cm x 66cm  
**£100 - £200**
- 448** A large Edwardian gilt framed Oil on Canvas coastal Study young boys with a barrel (as a boat), fishermen, boats etc., with a background of cliffs and atmospheric skies, signed and dated lower left J Collins, 1909, 80cm x 88cm (lined)  
**£300 - £500**
- 449** Early 20th Century Chinese Calligraphy panel contained within a prunus carved hardwood frame with gilt metal mounts, glazed, 135cm x 64cm (frame)  
**£150 - £250**



**Lot 446**

- 450** \*An early/mid 20th Century Oil on Panel Study of deer on a mountainous snowy hilltop, signed lower right J.S. Steel, 25cm x 35cm  
**£50 - £80**
- 451** A pair of ebonised framed and glazed Triptych hand coloured Japanese wood block studies (2)  
**£30 - £45**
- 452** A 19th Century gilt framed and glazed half length pastel Portrait Study of a gentleman in a blue overcoat, 24.5cm x 20.5cm  
**£80 - £120**
- 453** \*A gilt framed Oil on Panel Study of a Man o' War at full sail "Yallaroi", signed lower right Max Parsons, 48.5cm x 65.5cm  
**£100 - £150**
- 454** \*A large early 20th Century gilt framed Oil on Canvas countryside Study, lone figure with wheelbarrow before water, signed lower right W Robert, 80cm x 49cm  
**£200 - £250**
- 455** An unusual and large ebonised framed Oil on Canvas/Board?, full length Study of St. Catherine, 205cm total height  
**£600 - £800**
- 456** \*A 20th Century Impressionist Oil on Canvas by Elizabeth Jane Lloyd (1928-?) "Tulips On The Red Chair", contained within a moulded gilt distressed frame, gallery label verso for Sally Hunter Fine Art Limited No2 in The Exhibition Elizabeth Jane Lloyd March 1987, signed lower right with monogram "EJL" 76cm x 61cm  
**£250 - £350**



**Lot 447**



Lot 457

- |  |   |
|--|---|
| <p><b>457</b> Bernardo Amiconi (Italian, d.1879) a good 19th Century gilt framed Oil on Canvas Study “The Love Letter” signed and dated lower right 1877, 60cm x 49cm<br/><b>£2500 - £3000</b></p>           | <p><b>462</b> *A parcel gilt framed Oil on Artist’s Board Study “St. James’s Park, August” by James Longueville, signed lower right, 34cm x 49cm<br/><b>£150 - £200</b></p>   |
| <p><b>458</b> A gilt framed and glazed Limited Edition (54/950) colour Lithograph “Seated Dancer” after Edgar Degas 1834-1917, 48cm x 38cm<br/><b>£50 - £80</b></p>  | <p><b>463</b> A silver framed and glazed Pastel/Gouache Study depicting a barren alleyway, signed bottom right J Marlow, 64cm x 41cm<br/><b>£40 - £60</b></p>   |
| <p><b>459</b> *Charles Willmott (b1943, British) “Facade (2)” original study in graphite and oil on vellum paper, signed with mount 58 x 42cm<br/><b>£450 - £600</b></p>                                     | <p><b>464</b> Two similar gilt framed and glazed 19th Century Engravings depicting a Sultan with sabre and elaborate headdress and feathers and studies of courtiers etc.,<br/><b>£60 - £80</b></p>                               |
| <p><b>460</b> A Japanese triptych Woodblock Print attributed to Yoshitoshi (1839-1892), possibly from the series “Chronicle of the Ascent of the Toyotomi Clan”, Meiji circa 1869<br/><b>£100 - £200</b></p> | <p><b>465</b> Two 19th Century gilt framed and glazed hand coloured Engravings, seated figure and one other figure mounted<br/><b>£60 - £80</b></p>   |
| <p><b>461</b> *A 20th Century framed Oil on Canvas Study of boats at low tide, signed lower left Kenneth Denton, 50cm x 75cm<br/><b>£200 - £250</b></p>  | <p><b>466</b> A large gilt framed Oil on Canvas Study of a Man o’ War moored up, the majority of the crew de rigging the sails, signed lower right Paul S. (major craquelere to surface), 97cm x 109cm<br/><b>£250 - £350</b></p> |



**Lot 470**

- 467** A gilt framed early 20th Century Watercolour Study of fishermen awaiting the arrival of sailing boats, standing upon a harbour wall, indistinctly signed lower left, 48cm x 73cm **£300 - £500**
- 468** \*A large gilt framed Oil on Canvas Study "Begonias" by Leonard Appelbell February 1968, approximately 75c x 62cm **£150 - £200**
- 469** \*A similar gilt framed Oil on Canvas by Leonard Appelbell, still life flowers in a vase, 58cm x 74cm **£150 - £200**

**470** In the manner of David I Cox (1783-1859) a 19th Century gilt framed (later) Oil on Canvas countryside Study of figures, a cart horse and cattle upon a hillside path, 36cm x 61cm **£200 - £300**

**471** \*Wallace Wood (1895-1970) gilt framed early 20th Century Watercolour Study depicting a shepherd and sheep in open country landscape, signed lower left (unglazed) (address details of Artist Kings Road, Chelsea) verso, some fading, discolouration and foxing, 34cm x 50cm **£100 - £150**

**472** After Jean-Baptiste Greuze (1725-1805) a gilt framed Oil on Canvas shoulder length Portrait Study "Head of a Girl Draped with Scarf", paper cutting verso, 43cm x 34cm (some surface craquelere) **£300 - £500**

**473** Two gilt framed and glazed late 18th Century hand coloured Engravings "A Porter With a Hare" (numbered 121), together with a "A Country Attorney and His Clients" (numbered 553) (printed for and sold by Carington Bowles) (2), each image approx. 32.5cm x 25cm **£50 - £70**

**474** An interesting 19th Century framed and glazed printed and hand coloured (watercolour) floral pattern Template for a needlework Tapestry, 30cm x 25cm **£40 - £60**

**475** \*A 20th century Asian Watercolour "Royal Palace at Mandalay", signed indistinctly "M G Cheik?" and dated lower left, 24cm x 35cm **£40 - £60**

**476** A late 19th/early 20th Century framed Oil on canvas country riverside scene with buildings and tall trees to the distance, monogrammed lower right A.K.B (for Alexander Kellock Brown, Scottish, 1849 - 1922), 39.5cm x 50cm **£200 - £300**

**477** \*Dorothy Margaret & Elizabeth Mary ALDERSON (British, 20th century), "Still Life Roses and Fruit", Watercolour, signed lower right and dated 1976, framed and glazed, 34cm x 29cm **£100 - £200**



**Lot 472**





**Lot 478**

- 478** 19th century Neo Classical Oil on Canvas “Mignon”, signed with a monogram “EIB” and annotated verso “Mignon” and inscribed “Ella Bella Irving, Dresden”, unframed, 119cm x 90cm (A/F old repairs to canvas).  
**£3000 - £4000**
- 479** \*George Fiddes Watt (1873 - 1960), “The Old Net Weaver”, Oil on Canvas, signed lower left G F Watt 95 (1895), later gilt framed and glazed, Scottish gallery labels verso, 23cm x 28cm (Provenance Sotheby’s Glasgow Sale 29/11/99 Lot 103).  
**£600 - £800**
- 480** \*Albert Goodwin, R.W.S (1835 - 1942), “Summer at Sutton Courtney by Abingdon”, Watercolour, gilt framed and glazed, 23cm x 35cm  
**£300 - £400**
- 481** \*Roy Hewish (British, 20TH Century), three Oil on Board “Tickmorend Horsley”, “Near Horsley” and “Barton End”, Landscapes, signed lower right, framed, 34cm x 47cm (3)  
**£150 - £200**
- 482** After Peter Van den Velde (Dutch, 1634 - c1707), a pair of Marine Watercolours, gilt framed and glazed, 18.5cm x 27cm (2)  
**£200 - £300**
- 483** After Peter Van den Velde (Dutch, 1634 - c1707), Marine Watercolour, gilt framed and glazed, 32cm x 47cm  
**£100 - £150**
- 484** Attributed to Ellen L. Clacy (British c1853 - 1916), “Knowle Hall”, Watercolour, gilt framed and glazed, annotated on the gilt mount, 51cm x 40.5cm. The location of this interior is Knowle in Kent, an ancient country house which inspired many Victorian artists. Artist represented in the Victoria & Albert Museum public collection.  
**£1000 - £1500**
- 485** Attributed to Ellen L. Clacy (British c1853 - 1916), “Knowle Hall Fireplace”, Watercolour, gilt framed and glazed, annotated on the gilt mount, 49cm x 59.5cm. The location of this interior is Knowle in Kent, an ancient country house which inspired many Victorian artists. Artist represented in the Victoria & Albert Museum public collection.  
**£1000 - £1500**
- 486** Attributed to Ellen L. Clacy (British c1853 - 1916), “Knowle Hall Fireplace and Paintings”, Watercolour, gilt framed and glazed, annotated on the gilt mount, 56cm x 49cm. The location of this interior is Knowle in Kent, an ancient country house which inspired many Victorian artists. Artist represented in the Victoria & Albert Museum public collection.  
**£1000 - £1500**
- 487** A Hogarth framed and glazed 18th/19th Century humorous Engraving, “Elinour Rummie” (the famous Ale-Wife of England), together with a mid 20th Century framed and glazed Watercolour still life Watercolour Study of woodlands (2)  
**£30 - £50**



**Lot 488**

- 488** A good late 19th/early 20th Century Oil on Canvas “Caudebec, Normandy”, signed lower right Pierre Le Boeuff (active 1899-1920), 50cm 60cm **£600 - £800**
- 489** A good late 19th/early 20th Century Oil on Canvas “Abbeville, France”, signed lower right Pierre Le Boeuff (active 1899-1920), 44cm 60cm, *illustrated back cover* **£500 - £700**
- 490** A collection of Pictures to include “Prince Wordnoff’s Palace”, “Trebizond”, “Troop Ships Becalmed off Balaklace” and three coloured Lithographs, 26.5cm x 42cm **£50 - £70**
- 491** English School, late 19th Century Oil on Canvas, “The Darner”, 28cm x 23cm **£200 - £300**



**Lot 492**

- 492** \*A gilt framed Oil on Board Maritime scene of sailing boats entering a French harbour, blue skies and choppy waters, signed lower left Max Parsons, 32cm x 69cm **£150 - £250**
- 493** English School, late 19th Century three quarter Portrait, Colonel Edward Hansen, Bengal Staff, the sitter holding a dress sword, 61cm x 48.25cm **£200 - £300**



**Lot 494**

- 494** French School, 19th Century Oil on Canvas still life fruit etc., with monkey, 42cm x 47cm **£150 - £250**
- 495** J Ewbank, a 19th Century burr oak framed Oil on Artist’s Board “Dutch Port, Morning”, inscribed verso “From my sketches in Holland”, J Ewbank RSA, 24.5cm x 30cm **£150 - £200**
- 496** In the manner of Adriaen van Ostade (1610-1685), burnished gilt framed Dutch style Oil on Panel, interior scene with figures before a circular table and fire piece, 19cm x 16cm, *illustrated inside front cover* **£100 - £150**
- 497** \*A framed Oil on Board “Place” by Benet Spencer, originally exhibited at The Royal Academy Summer Exhibition 1995 (label verso), 28cm x 38.5cm **£50 - £100**
- 498** An early 20th Century Chinese Collage depicting five Chinese characters in traditional dress, framed and glazed, 34cm x 68cm **£100 - £150**
- 499** A 19th Century Dutch School Oil on Canvas (laid on board) depicting a young man at the fireside smoking a pipe, later gilt framed, 27cm x 20.5cm **£100 - £200**
- 500** \*Lillian Stannard (British, 1877/84-1944), “An old Summer House in the Wilderness”, Watercolour, signed lower left, framed and glazed, label verso for Arthur Akermann & Son, Ltd, 157a New Bond Street, London, 35cm x 25cm. **£300 - £400**
- 501** A Hogarth framed and glazed, hand coloured, early 17th Century Map Engraving “Oxfordshire”, 31cm x 51cm (folded, formerly part of an Atlas) **£100 - £150**
- 502** A Hogarth framed and glazed, hand coloured, 18th Century Map Engraving “Bark Shire”, 37cm x 49cm (folded, formerly part of an Atlas) **£40 - £60**
- 503** \*Peter Evans RBSA (b.1943), Derelict Truck near Verteillac, signed Acrylic, 30.5cm x 30.5cm **£300 - £500**
- 504** \*Keith Dunkley (b.1942), The Citruc Farm, signed Acrylic, 30.5cm x 30.5cm **£200 - £300**



**Lot 513**



**Lot 515**

**505** \*Keith Dunkley (b.1942), Star Grass and Poppies, signed Acrylic, 30.5cm x 30.5cm **£200 - £300**

**506** \*John Pearce (b.1942), Studio interior with paraffin heater, signed Oil on Canvas, 45.7cm x 30.5cm **£200 - £300**

**507** \*Yvonne Tocher, Cricket match scene, signed Oil, 25.4cm x 33cm **£200 - £300**

**508** \*Arthur W Gay (1901-1948), Study of a waddling duck, signed and dated Watercolour, 20.3cm x 25.4cm **£250 - £350**

**509** \*John Blockley RI (1921-2002), a set of four sea Studies, Watercolours, 10.2cm x 12.7cm **£150 - £250**

**510** \*Ken Howard RA (b.1932), a pair of evening landscapes, Oils, 15.2cm x 22.9cm **£800 - £1000**



**Lot 508**



## MIRRORS AND BOOKS

- 511** A good and large 19th Century gilt framed Pier Mirror, the cornice above a frieze with applied floral decoration within arcading and flanked by two female masks, the hand bevelled rectangular portrait shaped plate flanked by further foliate style decoration, 114cm wide x 175cm high **£300 - £500**
- 512** An extremely large 19th Century style arched Pier Glass, the pediment with oak leaves and acorns above an arched mirror plate with hand bevelling and acanthus style border, approx. 216cm high x 110cm wide **£500 - £700**
- 513** An early 19th Century Regency period carved giltwood wall hanging convex Looking Glass surmounted with an open mouthed Eagle, 100cm high x 54.5cm wide (widest point) Illustrated on page 41 **£150 - £200**
- 514** A 19th Century water gilded Picture Frame (now as a mirror), beaded border and acanthus moulded edge **£80 - £120**
- 515** A 19th Century (early 18th Century style) walnut and parcel gilt Pier Glass, the shaped pediment with gilded scallop shell above hand painted Naval battle scene (possibly Trafalgar), and parcel gilt frame, 80cm Illustrated on page 41 **£150 - £180**
- 516** A 19th Century mahogany wall Mirror, the frieze and pillars with ebonised decoration, the squared mirror plate with ormolu border and foliate scrolls to the corners, the plate 57cm x 85cm **£280 - £350**
- 517** An early 19th Century mahogany, shield shaped Toilet Mirror on ivory capped 'S' shaped supports, the bow front base fitted with three drawers, 44.5cm wide **£100 - £150**
- 518** A large 19th Century mahogany framed Cheval Mirror on scrolling supports with castors, total height approx. 154cm **£150 - £250**
- 519** Puck of Pook's Hill by Rudyard Kipling, Macmillan and Co. Ltd, London 1906. Original Red Gilt Embossed Cloth. 1st Edition with gilt elephant imprint to front board. **£15 - £25**
- 520** Sir John Wilson (Bart), "The Royal Philatelic Collection" red Morocco bound, gilt tooled Royal Cipher (the work published with the gracious permission of His Majesty, King George VI), by Sir John Wilson, Bart, Keeper of the Royal Philatelic Collection, copyright 1952 **£50 - £75**
- 521** Two bound Volumes, "Railway Wonders of The World", together with the similarly bound Volumes "Shipping Wonders of The World" (4) **£15 - £25**

- 522** A selection of hard back Volumes etc., including "Thames Waters" by Roger Pilkington, "Venture in Diamonds" by David E Walker and 'The Book, its Printers, Illustrators and Binders', gilt tooled velum (selection) **£20 - £30**
- 523** Five hard back Volumes relating to hunting etc., including "Mount & Man", "Hunts with Jorrocks", "Hounds are Home", "Printers Pie" and "Mr Jar rock's Lectors" (5) **£50 - £80**
- 524** A selection of five hard back, bound Volumes relating to hunting, "The Devon and Somerset Stag Hounds" (illustrated by Lionel Edwards), "A Sportsman's Bag", "My Hunting Sketch Book" (written and illustrated by Lionel Edwards), "Cross Country With Hounds" by H A Stewart and "Ratcatcher to - Scarlet" by Cecil Aldin (5) **£80 - £120**
- 525** A selection of hard back Volumes relating to hunting and riding etc., including "Horse Sense" and "Horsemanship of Today", "A Hundred Grand Nationals" and "Hunting England" etc. (9 books), together with two smaller Volumes "The Crawley and Horsham Hunt" and "The Southdown Hunt" (11) **£50 - £80**
- 526** A selection of twelve hard back Volumes relating to hunting and racing etc., including "Baily's Hunting Directory", "Memoirs of a Fox Hunting Man", "Bridle wise" and "Flat Racing" etc. (12 volumes) **£50 - £70**



Lot 529



**A selection of Hunting and Equine Books**

**527** A late 19th Century bound Volume (ill Leech 1854) "Handley Cross", or "Mr Jorrocks's Hunt", by John Leech 17 coloured illustrations on steel, separate pages, 84 black and white illustrations on wood in text, typical impressed illustrated binding cover **£30 - £50**

**528** Early 20th Century Asian Books to include a book of Japanese character prints along with a book of Chinese Watercolours (2) **£50 - £100**

**529** 19th century illuminated manuscript from the City of Adelaide, Australia to the new Governor of South Australia Sir William Francis Drummond Jervis GCMG, CB, FRS 1877. Contained within a gilt tooled leather presentation folio, photos & provenance. **£100 - £150**

**533** A small hand knotted Persian style silk mixture Rug, central floral style medallion against a dark turquoise ground, the salmon pink and cream borders with varying, stylized and repeating patterns within, approximately 155cm x 104cm **£70 - £90**

**534** A large hand knotted Eastern Carpet, the central cobalt blue lozenge against a rose ground and with lime green and dark blue borders surrounding, 335cm x 251cm **£150 - £250**

**HAND KNOTTED RUGS AND CARPETS**

**530** A Persian style silk mixture Prayer Rug, stylized repeating borders against a salmon ground and central design with foliate style designs, approx. 132cm x 87cm **£70 - £100**

**531** A hand knotted Persian Rug in typical style, the "elephant's foot" centre surrounded by alternating borders with stylized repeating patterns against a red ground, approximately 206cm x 130cm **£40 - £60**

**532** A modern hand knotted Persian style Rug, stylized flowers and repeating patterns against a cream ground and with an alternating cream and red border in typical style, approximately 194cm x 145cm **£70 - £90**



**Lot 534**



**Lot 536**



**Lot 537**

**ANTIQUÉ, PERIOD AND  
DECORATIVE FURNITURE**

*(including Oriental)*

**535** A 19th Century Empire giltwood and gesso Stool, the square gold cut velvet upholstered top above a well carved Classical frieze supported on four carved scroll feet, 34cm x 34cm (max) **£150 - £250**

**536** A pair of 20th Century hand carved yolk back Armchairs known as Guan-Mao-Yi or Official's Chairs. Provenance - the chairs were originally imported from China and purchased directly from a UK based Far Eastern antiques dealer, 111cm high x 61.5cm wide x 52.5cm deep **£300 - £500**

**537** An antique Asian (Tibetan) Chest, the dome top above moulded rails and a panelled body, further over three base drawers all having ring handles, supported on stile feet, 109cm high x 125cm wide x 68cm deep (A/F) **£200 - £300**

**538** An early 19th Century carved Chinese Stand, the circular top inlaid with engraved figures in landscape in mother of pearl, the frieze carved with Chinese symbols with scroll carved tripod base united with a carved "Chinese Knot", platform stretcher, 60cm high (A/F top warped) **£180 - £220**

**539** A 19th Century Asian (Tibetan) Chest with iron handles, the front decorated with a circular clasp and hand painted with a mythical beast amongst ribbons on a red ground with a border of butterflies and Chinese symbols, 30.5cm high x 45cm wide x 31.5cm deep **£300 - £400**

**540** A 19th Century Chinese red leather Despatch Box, the rectangular top decorated with raised gilt figures in a landscape with similar decoration to all sides and the interior of the lid, metal clasp and hinges, 14.5cm high x 26cm wide x 15cm deep **£100 - £200**



**Lot 540**

**541** A 19th Century Chinese Qing Dynasty hardwood Travelling Chest of Drawers, the archaic style carved handle above two panel doors enclosing five drawers with brass handles, 40cm x 28cm **£250 - £350**

**542** A fine 19th Century tilt top, circular mahogany, crossbanded and marquetry bird cage mechanism Occasional Table, the turned stem with inlaid marquetry husks and flowers above a wrythern bulb and three downswept legs with corresponding floral style marquetry terminating in pad feet, 63cm diameter **£550 - £650**





**Lot 543**



**Lot 547**

- 543** A very fine Chinese hardwood early 20th Century Suite comprising a two seater Sofa, two matching open Armchairs and an oval topped Occasional Table, the sofa and single chairs very finely carved with open winged phoenix's resting upon rocks above superb inlaid mother of pearl and ivory (shaped) panels decorated with Taoist symbols, exotic birds, insects, foliage, plants and stylized emblems etc., each arm with a carved lotus style rest flanking solid seats and pierced front rails further inlaid with Chinese ivory coins with hand engraved characters etc., each on four cabriole legs terminating in tightly carved flower head scrolls, sofa approx 129cm wide each (4)

*NB: It is worth noting that this superb suite has been in the possession of the present owner for many years and the chair backs are similarly inlaid and decorated etc., quite obviously designed to be situated centrally within a very large and ornate room.*

**£4000 - £6000**

- 544** A very fine Chinese hardwood early 20th Century Suite comprising a two seater Sofa, two matching open Armchairs and an oval topped Occasional Table, the sofa and single chairs very finely carved with open winged phoenix's resting upon rocks above superb inlaid mother of pearl and ivory (shaped) panels decorated with Taoist symbols, exotic birds, insects, foliage, plants and stylized emblems etc., each arm with a carved lotus style rest flanking solid seats and pierced front rails further inlaid with Chinese ivory coins with hand engraved characters etc., each on four cabriole legs terminating in tightly carved flower head scrolls, sofa approx 129cm wide each (4)

*NB: It is worth noting that this superb suite has been in the possession of the present owner for many years and the chair backs are similarly inlaid and decorated etc., quite obviously designed to be situated centrally within a very large and ornate room.*

**£4000 - £6000**

- 545** A fine early 20th Century Chinese hardwood and mother of pearl inlaid oval topped Occasional Table on cabriole legs (matches previous two lots) **£1000 - £1500**

- 546** A Regency period rosewood Card Table, the fold over top above central foliate style carving and scrolls, circular stem and platform base with four dolphin style carved supports, on squat bun feet **£500 - £700**

- 547** An early 20th Century walnut Side Table of good colour (in 18th Century style), the crossbanded moulded top above two half width drawers flanked by canted corners, raised on slender elongated cabriole legs carved with ear pieces and terminating in circular pad feet, 46cm wide **£200 - £300**



**Lot 548**

- 548** An early 19th Century bow fronted mahogany Chest of good colour and pleasing proportions, the four full width graduated drawers each with stamped gilt metal ovals and unusual vase shaped bone escutcheon, shaped apron and French style splayed bracket feet, 106cm wide **£300 - £400**



**Lot 550**

- 549** A George III period mahogany Cabinet/Bookcase, the flaring cornice above two doors with "chicken wire" style grills enclosing shelves, raised on plinth base **£200 - £300**
- 550** An unusual child's primitive ebonised ash dugout Chair, the central heart motif in relief above circular seat and with side door below, 65cm high **£800 - £1200**

- 551** A large mid 20th Century marble Delatte Model of a smiling Bacchus, on square plinth base, approx. 8.25ft **£2000 - £2500**

- 552** A good modern pair of seated composition Gun Dogs (possibly after the original 19th Century model by Austin and Seeley), each seated four square in relaxed pose on rectangular plinth base, each approx. 78cm high **£1800 - £2200**

- 553** A large and unusual floor standing Terrestrial Globe, brass incremental ring and ebonised four splay stand terminating in brass terminals, the globe approx. 46cm wide **£600 - £800**



**Lot 552 Part (pair)**



**Lot 554**



**Lot 559**

- 554** A good and unusual early 19th Century figured elm Semainier, faux marble top above seven full width drawers, raised on shaped bracket feet, 104cm wide x 182cm high **£1600 - £2000**
- 555** An unusual late 18th Century Swedish Gustavian Chest, the castellated top above five full width drawers, on short square tapering legs, 128cm wide **£600 - £800**
- 556** An early 19th Century three division mahogany Music Canterbury, concave top above slender turned supports terminating in gilt metal castors **£250 - £400**
- 557** A George III period mahogany and boxwood strung Sectaire Bookcase, the broken swan neck style pediment with applied flower head roundels above two twelve panelled glazed doors with astragal glazing bars, further over a fitted Sectaire drawer and further drawers below **£500 - £700**
- 558** A 19th century Rosewood, Satinwood and marquetry centre table, the circular moulded edge top decorated with a central floral garland and floral borders with an inlaid laurel frieze, supported on square tapering legs inlaid with harebell flowers and united with a shaped stretcher, the under frame stamped Hampton & Sons, Pall Mall East, Diameter 42", Height 29", *illustrated inside front cover* **£1000 - £1500**

- 559** A Regency period mahogany Sofa Table, the reeded edge top above one true, full length drawer and three dummy drawers (two opposing), on standard style ends with downswept reeded legs terminating in lion's paw castors and united by a high turned stretcher, 93cm wide (leaves down) x 66cm deep x 70cm high **£300 - £500**
- 560** A Regency period mahogany Sofa Table, single turned pedestal, platform base and four downswept reeded legs terminating in cap castors, 94cm wide **£400 - £600**
- 561** Late 18th / early 19th century Georgian red lacquered blanket chest on stand, decorated overall with raised gilt Chinoiserie figures before a Pagoda in a rural landscape, supported on stile feet with fret carved decoration, Length 53", Height 36", Depth 25". **£2000 - £3000**
- 562** An early 18th Century walnut Bachelor's Chest, quarter veneered herring bone banded folding top above two half width and two full width graduated drawers, on bracket feet (basically 18th Century), 79cm wide **£400 - £600**
- 563** An early 18th century walnut veneered and herringbone banded Chest on Chest, moulded cornice above fluted canted corners, three short over six full width drawers and a central brushing slide, on bracket feet, 103cm wide, *illustrated back cover* **£2500 - £3500**
- 564** A late 18th Century Sheraton period Bookcase, the frieze painted and decorated with flowers and foliage and ebonised stringing, fitted adjustable shelves enclosed by a pair of bow glazed bar doors, raised on a later stand with shaped apron and square tapering legs with spade feet, 89cm wide (believed to be the top of a bureau bookcase) **£1200 - £1400**





**Lot 565**

- 565** A mid Victorian Davenport, the superstructure fitted with pigeonholes enclosed by a pair of inlaid panelled doors, an interior of four drawers beneath the roll top, the base with a bank of four drawers to one side and four false drawers to the other side having an inlaid panel front, on bun feet, 58cm wide **£1400 - £1600**
- 566** A large and impressive 18th Century oak and mahogany crossbanded Dresser, the shelved superstructure above an arrangement of four drawers with brass swan neck handles, shaped wavy apron and on front cabriole legs terminating in pointed pad feet, 257cm wide x 54cm deep x 207cm high, *illustrated inside back cover* **£3000 - £4000**
- 567** A 19th Century Indian hand carved and painted Wall Mirror decorated with flowers and tendrils, old blacksmith braces to verso, 98cm x 64cm **£200 - £300**
- 568** A late 18th Century mahogany Writing Bureau, the cleated fall opening to reveal fitted interior of drawers, pigeonholes etc., further over four full width graduated drawers with stamped gilt metal ovals, raised on bracket feet, 106cm wide **£200 - £300**



**Lot 569**

- 569** A Regency period fold over top mahogany Tea Table, turned stem and on four scrolling and reeded legs terminating in ornate cast brass castors, 92cm wide **£250 - £350**
- 570** A George III period fold over top, bow fronted mahogany Tea Table, ebony strung tablet style frieze and square tapering legs terminating in brass castors, 99cm wide **£150 - £250**
- 571** An interesting 19th Century fruitwood Rocking Chair having rattan caned seat (bears original silver plaque "Awarded to William Snowdon Esq.") and dated 1885 "For The Best Fat Cow Exhibited" (A J Crow's Cattle Show 1885) **£150 - £250**
- 572** A rare 19th Century French cherrywood double door Bijouterie Cabinet, the two hinged doors above an arrangement of six drawers, raised on short cabriole legs, 200cm wide **£1500 - £2000**
- 573** A mid to late 19th Century Continental walnut and kingwood crossbanded Commode, the burr walnut top above three full width drawers, raised on short turned feet, 114cm wide **£400 - £500**
- 574** A late 17th/early 18th Century oak Mule Chest of good colour, the scratch moulded top above three fielded panel front and two half width geometrically fronted drawers below with later brasses, raised on stile feet, 127cm wide **£200 - £300**
- 575** A George III period mahogany, boxwood strung and satinwood crossbanded Side Cabinet of small proportions, the large three quarter brass gallery topped with four Adam style urn finials above single full width drawer with stamped gilded brass ovals, two pa **£300 - £400**
- 576** A 19th Century walnut Stool in Louis XV style, later damask upholstered seat above four moulded cabriole legs headed with flowers **£150 - £200**



**Lot 572**

**577** A late 19th Century marble topped, plum pudding mahogany break front Credenza, two frieze drawers, two panelled cupboards below, bow fronted marble shelves and two further bow fronted, "hinged" drawers, raised on short, turned and tapering fluted legs, stamped by the maker Ternisien & Dantant (Paris), 181cm wide x 52cm deep x 89cm high **£300 - £500**

**578** A George III period mahogany Sectaire Bookcase, the lunette carved cornice above two fifteen panel glazed doors with astragal glazing bars above a Sectaire drawer, fully fitted with pigeonholes, drawers and central cupboard door, further over two fielded panel doors enclosing original slides, raised on ogee bracket feet, 112cm wide x 220cm high **£500 - £700**

**579** A George style (later) mahogany and satinwood crossbanded Sideboard, the single drawer flanked by two bow fronted cupboard doors and raised on square, tapering boxwood strung legs terminating in spade feet, 123cm wide **£200 - £250**



**Lot 577**

**580** A late 19th Century stained wood, rattan upholstered, two seater Canape, the top rail carved with quivers and Classical style ornament as an allegory, raised on turned, tapering and fluted front legs



**Lot 578**



Lot 583



Lot 584



Lot 590

- 581** A mid 19th Century mahogany, fold over Card Table, the rectangular moulded top opening to reveal a circular baize interior over a well carved and shaped frieze supported on an octagonal baluster stem terminating with a leaf carved, circular knob, the whole supported on a convex, quatreform platform base, supported on carved scroll feet terminating in castors, 76cm high x 90cm wide **£300 - £400**
- 582** A late 19th Century rosewood, boxwood strung and marquetry Bijouterie Cabinet, the hinged glazed top above square tapering, boxwood strung legs terminating in castors and united by an 'H' form stretcher **£100 - £150**
- 583** An early 18th Century oak Chest, two half width over three full width graduated drawers within double 'D' mouldings, raised on stile feet. 98cm wide **£600 - £800**
- 584** A 19th Century French Louis Philippe period figured mahogany Writing Desk, the green leather skiver with Greek key style border above an arrangement of two slides and four drawers (the right hand side as two), five dummy drawers opposing, raised on turned tapering legs terminating in brass castors, 163cm wide x 81cm deep x 74cm high **£400 - £600**
- 585** A set of six mid 19th Century walnut balloon back Chairs, each with foliate carved top rail and overstuffed serpentine fronted seat, on moulded cabriole front legs **£300 - £500**
- 586** An unusual early 18th Century oak Side Chair, pierced top rail, panelled back, similar seat and high carved front rail **£140 - £180**
- 587** A set of eight (6+2) mahogany Dining Chairs, the carvers with shield shaped backs, pierced splats, shaped reeded arms leading down to an overstuffed, bow fronted front rail and raised on square tapering moulded front legs terminating in spade feet **£500 - £700**
- 588** Antique six foot Cast Iron Garden Bench decorated with Griffin arm rests and having wooden slats, Length 183cm, Height 80cm. **£2500 - £3500**
- 589** A harlequin set of six mid 19th Century (all made at the same time by the same maker) rosewood balloon back salon Dining Chairs, each with ornately carved top rail/crest rails, three Chairs turned legs, three with cabrioles, buttoned squab cushions (6) **£400 - £600**
- 590** An unusual set of ten (8+2) Glasgow School style Arts and Crafts oak Dining Chairs each with high angled back, pierced top rail and overstuffed seats **£500 - £700**
- 591** A set of twelve (10+2) George III style ash, country spindle back Chairs, rush seats and turned legs united by stretchers **£500 - £800**
- 592** A pair of late 18th Century single Chairs with pierced Gothic style upright splats to the backs, fitted drop in seats, on fluted legs and square stretchers **£120 - £150**
- 593** Six Regency mahogany Dining Chairs, the cresting rails with boxwood stringing, the reeded bow shaped horizontal splats each centred by a brass floral roundel, having upholstered seats on square sabre front legs (6) **£500 - £700**





**Lot 591**



**Lot 612**

- 594** An early 20th Century (in 18th Century style) unusual three seater Settle, the yolk shaped top rail above pierced splat, drop in seats, shapes arms and on cabriole front legs **£300 - £450**
- 595** A set of seven (6+1) early 19th Century ash Country Chairs, the Carver with vertical turned spindles, rush seat and turned front legs united by similarly turned stretcher **£300 - £400**
- 596** 19th century Chinese Elmwood Horseshoe Armchair, with good original colour and patina, Shanxi, China, Height 86cms, Width 65cms. **£150 - £250**
- 597** An 18th/19th Century Chinese square hardwood Side Table (possibly Hongmu) **£200 - £300**
- 598** An early 19th Century two drawer, drop leaf Work Table, raised on turned, tapering, faux bamboo legs terminating in brass castors, 35cm wide (leaves down) **£150 - £200**
- 599** An antique walnut, banded and feather banded, table top Writing Bureau in early 18th Century style, the sloping fall opening to reveal a fitted interior of central cupboard door, drawers and pigeonholes etc., further over a single full width drawer below flanked by two lopers, 63cm wide **£150 - £200**
- 600** A late 18th Century George III period serpentine fronted, fold over top Tea Table, raised on square tapering fluted legs terminating in block feet **£400 - £600**
- 601** A 19th Century patinated oak metamorphic Library Chair **£260 - £280**
- 602** A Regency period flame mahogany Work Table, the quarter veneered top opening to reveal full fitted compartmentalised interior, four shaped supports leading to an acanthus bulb and triform base with lion's paw style feet (minus wool slide), 51cm wide **£200 - £300**
- 603** A mid 19th Century circular top, walnut Torchere of good quality, barley twist style stem and circular base with scrolling feet, the top 34cm diameter **£150 - £200**
- 604** A 19th Century Bank of 20 drawers, raised on shaped bracket feet, 73.5cm wide **£350 - £450**
- 605** A good mid 20th Century carved and dapple grey painted Rocking Horse, approx. 135cm long **£500 - £700**
- 606** An unusual pair of reconstituted verdigris'd stone Swans **£400 - £600**
- 607** A 19th Century grained and painted Chest of small proportions, overhanging top above three full width graduated drawers, raised on bracket feet, 79cm wide **£200 - £250**
- 608** A 19th Century Scandinavian pine (original paint) Chest, the hinged top above two incised stylized tulips, raised on bun feet, 100cm wide **£300 - £400**
- 609** A Louis XV style marble topped, walnut and gilt metal mounted Bombe Petit Commode (modern), three full width drawers, shaped frieze and gilt metal chutes and sabots on cabriole supports, 90cm wide **£400 - £600**
- 610** An early 19th Century French fruitwood Armoire, central floral carved pediment above two fielded panel doors, shaped frieze and on squat cabriole legs, 143cm wide x 221cm high **£800 - £1200**
- 611** An early 19th Century Charles X marble topped fruitwood Commode of good colour, four full width drawers and on bracket style feet, 130cm wide **£600 - £800**
- 612** A 19th Century flame mahogany facade Continental Commode of small proportions, four full width drawers with cast brass swan neck handles, canted corners and raised on French style scrolling feet, 90cm wide **£400 - £600**
- 613** A Louis XVI style (later) marble topped Bedside Cabinet, single drawer, gilt metal mounts and panelled door below, raised on turned tapering fluted legs united by a shaped undertier, 43cm wide **£180 - £200**
- 614** A late 19th/early 20th Century marble topped Bedside Cabinet, single full width drawer, cupboard door below (modelled as three further bow fronted drawers), gilt metal mounts, quarter veneered sides and turned legs united by a platform stretcher, 50cm wide **£200 - £250**
- 615** A 19th Century painted Swedish Chest, cushion moulded top drawer and three further full width drawers on bun style feet, 103cm wide **£300 - £400**

- 616 An unusual pair of 19th Century painted Swedish Chests, the thumbnail moulded tops above five full width drawers, the top drawer flanked by geometric mouldings and fluted sides below, each on squat bun feet, 89cm wide (2) **£500 - £700**
- 617 An early 19th Century mahogany Side Cabinet, the single full width Secretaire style drawer over two flame mahogany panelled doors, raised on plinth base, 87cm wide **£200 - £300**
- 618 A Music or Magazine Canterbury in mahogany supported on turned legs with brass castors, circa 1860, 40cm wide x 35cm deep x 49cm high **£300 - £400**
- 619 A satinwood Writing Table on tapered legs, inlaid with kingwood, later brass handles and green tooled leather top, circa 1920, 62cm wide x 57cm deep x 79cm high **£550 - £700**
- 620 A pair of bamboo and oak Cabinets, enclosed doors mounted with semi precious stones, signed in bottom right hand corner, circa 1900, 93cm wide x 32cm deep x 129cm high **£650 - £800**
- 621 A pair of reproduction mahogany and strung Library Steps, hinged lids with reeded edges and green leather surface with gilt tooling, raised on reeded sabre front legs (one water damaged, scuffs and generally in a state of disrepair, the other in good con **£100 - £150**
- 622 A converted George III Commode, the reeded top above five full width graduated drawers, on bracket feet, 63cm wide **£150 - £200**
- 623 A late 18th Century George III period mahogany Writing Bureau, the cleated fall opening to reveal usual fitted interior of central cupboard door, pigeonholes, small drawers etc., all over four full width graduated drawers with cast brass swan neck handle **£150 - £250**
- 624 A well carved 19th century child's painted gesso rocking horse in the manner of Ayres, with original leather saddle and bridle and set on a turned trestle base with iron safety rockers, Height 43" max. **£1500 - £2000**
- 625 An early 20th Century octagonal, oyster yew wood veneered, two handled Occasional Table, square tapering splayed legs united by a cross framed stretcher, 56cm wide **£100 - £150**
- 626 A pair of 19th Century serpentine sided, walnut Occasional Tables, quarter veneered top above a deep figured frieze and four square tapering moulded legs decorated with Adam style husks, 61cm wide **£200 - £300**
- 627 A late 19th/early 20th Century mahogany and satinwood crossbanded Side Table, two half width banded drawers above single full width drawer and square, tapering boxwood strung legs, 40cm wide **£100 - £150**
- 628 An early 20th Century double baluster, elongated mahogany Lamp Standard, the base as a lotus **£50 - £80**
- 629 A late 18th Century Sheraton period, mahogany, rectangular Wine Cooler, the top and front with oval patera and bats wing spandrels to the sides, crossbanded and inlaid boxwood stringing on square tapering legs, 42cm wide **£500 - £700**

- 630 A mid 19th Century mahogany, folding Coaching Table with brass counter sunk hinges on shaped legs and turned stretchers, 89cm wide **£240 - £280**
- 631 A late 17th Century rectangular oak Table with twin plank top, fitted drawer to the frieze and on spiral turned legs united by square stretchers, 89cm wide **£500 - £700**



**Lot 632**

- 632 A 19th Century William and Mary style walnut Lowboy, feather banding to top and drawer fronts, supported on turned legs united with a cross form stretcher, on turned bun feet **£300 - £400**
- 633 An early 19th Century mahogany Table on turned column and tripod support, the rectangular top 75cm wide **£180 - £220**
- 634 A late 18th Century mahogany Table on a turned column and splayed tripod support, 43cm wide **£240 - £280**
- 635 A 20th Century Edwardian mahogany Armchair, the shaped back inlaid with a central mask and surmount of acanthus and other scrolls, the upright splats, arms and cabriole legs with ivory stringing **£150 - £180**
- 636 A George IV mahogany, drop leaf Work Table fitted with two drawers to one side and two false drawers to the other, on turned legs, 72.5cm wide **£250 - £350**
- 637 An early 19th Century mahogany octagonal Table, raised on a turned column and splayed tripod support, the top 50cm wide **£160 - £240**
- 638 A Regency mahogany Gillows style Tea Table, the folding top with moulded border, ebonised stringing to the frieze and carved flower heads to the corners, on four turned and reeded legs, 89cm wide **£400 - £600**
- 639 A George IV mahogany, drop leaf Work Table, fitted drawer to one side and false drawer to the other, on turned legs, 66cm wide **£150 - £250**

- 640 An early 19th Century Regency period, tilt top Occasional Table, reeded edge top above turned stem and four downswept reeded legs terminating in brass castors, 77cm wide **£160 - £200**
- 641 A George III period semi-elliptical, fold over top, mahogany Tea Table raised on square tapering legs, 91cm wide **£250 - £300**
- 642 An 18th Century oak Side Table, the thumbnail moulded overhanging top above single full width drawer, raised on baluster and block supports united by stretchers, 86cm wide **£300 - £450**
- 643 An early 19th Century French figured mahogany Regency style Bateau Lit, scrolling ends and on short square feet, approx. 200cm wide **£500 - £700**
- 644 A 1930's Art Deco three piece Suite to include a two seater Sofa and lady and gentleman's Armchairs having original covers **£500 - £700**
- 645 An antique oak panelled backed Corner Settle (made up from 17th/18th Century parts), the top panels carved with a guilloche, above further elongated panels and well patinated seat, gun barrel style front supports united by stretchers, 143cm high **£250 - £400**
- 646 A mid 19th Century button back upholstered and walnut Chaise Longue, foliate carved moulded legs on castors, approx. 163cm long **£250 - £350**
- 647 A mahogany drop leaf Table, 170cm wide x 114cm deep x 700cm high **£350 - £400**
- 648 A good circular mahogany and leather inset topped, tilt top Gaming Table, the six "guinea wells" above a turned gun barrel style stem and three downswept legs terminating in pad feet and brass castors, approx, 121cm diameter **£600 - £800**
- 649 An early Victorian circular mahogany tilt top Breakfast Table, bulbous reeded stem and triform base, on lotus style squat bun feet, 131cm diameter (replaced block) **£250 - £400**
- 650 A large oak Refectory Table designed by Ambrose Heal (circa 1915), planked top above stop chamfered vertical, bulbous supports united by a footboard stretcher, 213cm long x 91cm wide x 76cm high **£400 - £600**
- 651 A good reproduction George III style, mahogany Dining Table having two extra leaves, two turned pillar supports and downswept reeded legs terminating in brass lion's paw castors, 265cm (leaves in) **£150 - £250**
- 652 A Regency mahogany Breakfast Table with boxwood stringing, raised on a ring turned central column and quadruple support with brass hair claw feet, the top 137cm and 100cm **£200 - £300**
- 653 A good pair of carved walnut Classical style Columns with egg and dart moulding and Doric capitals, each approx 225cm high **£500 - £600**
- 654 A French painted Buffet de Couer, two glazed doors over drawers and cupboards, fine French original brass hinges and escutcheon, circa, 1860, width 140cm base 129cm top, depth 49cm base 42cm top, height 102cm base 128cm top **£550 - £700**
- 655 A George III period mahogany Chest on Stand (the stand now minus original legs and with replacement bracket feet), the shaped cornice above two half width and three full width graduated drawers, further over the stand with a single full width drawer and **£200 - £300**
- 656 An early 20th Century Heals "Letchworth" oak Dresser, castellated cornice above two half width drawers and two panelled cupboard doors below, on square legs, 153cm wide x 52.5cm deep x 171cm high **£500 - £700**
- 657 An early 20th Century Arts and Crafts oak Dressing Table and Stool, the octagonal adjustable mirror above superstructure with two small drawers, two further half width drawers below, arched frieze and square section chamfered legs, together with an upholstered oak Stool of similar period with geometric style sides and on ball feet (2) **£150 - £250**
- 658 A set of four early 20th Century oak and upholstered Bar Stools in the manner of Gustav Stickley **£150 - £250**



**Lot 659**

- 659 An early 20th Century oak Compactum designed by Ambrose Heal, the chequer strung cornice above a parquetry and panelled door, three further drawers below and flanked by two angular panelled cupboards, 157cm wide x 52cm deep x 190cm high **£400 - £600**
- 660 A late 19th Century Arts and Crafts oak Wardrobe with iron strap hinges, designed by Ambrose Heal, circa 1898 as part of his first commission for his father's firm (the design name is "St Ives"), 198cm high x 128cm wide x 61cm deep **£400 - £700**

**END OF SALE**





Incorporating Martin Elliott Partnership

*Fine Art Auctioneers*

## Forthcoming Auction Sales

### **Wood Turning Equipment**

**For Sale by Tender as a whole**

**At Churchill, Near Chipping Norton, Oxfordshire**

Including two Jubilee wood turning lathes, a rare Cast Iron Lathe circa 1862 by G Taylor of Birmingham Ltd., with outboard for heavy timber turning, hand tools, chucks, rests, power tools, drill bits, saws, files, extractor, grinders.

Well over 500 items.

**Tenders to be received by Noon 23rd Oct. 2012**

**Viewings: 17th Oct 6pm-7pm &**

**20th Oct 11am-12noon**

For further details see our website or contact Adrian Cannon on 01451 820913 or Email: [adrian.cannon@taylorandfletcher.co.uk](mailto:adrian.cannon@taylorandfletcher.co.uk)

### **Collective Farm Machinery Sale**

**At WOODSTOCK, Oxfordshire**

**(Nearest Postcode OX20 1QF)**

**Thursday 25th October 2012**

Entries close for catalogue on Tuesday 9th October 2012

For further details see our website or

contact Adrian Cannon on 01451 820913

or Email: [adrian.cannon@taylorandfletcher.co.uk](mailto:adrian.cannon@taylorandfletcher.co.uk)

### **Saturday 17th November 2012**

Monthly Sale of Antique, Reproduction and Modern Furniture and Household Effects, to be held at the Royal British Legion Hall, Bourton on the Water at 10.00am

*To include our twenty third annual sale of Paintings, Oils and watercolours (Approx. 600 assorted lots - Entries now being invited)*

### **November 2012**

**Taylor & Fletcher Regional Auction Sales of Property, Land, Development and Business Opportunities**

(Please contact Charles Arkell at the Bourton office - 01451 820913)

# **Saturday 8th December 2012**

Monthly Sale of Antique, Reproduction and Modern Furniture and Household Effects, to be held at the Royal British Legion Hall, Bourton on the Water at 10.00am

*To include our Seasonal offering of Fine Wines, Ports and Champagnes, and Antique and Modern Jewellery*

*(Approx. 600 assorted lots - Entries now being invited)*

# **Thursday 21st March 2013**

Our first auction sale for 2013 of four annual selected lot specialist sales of Antiques, Fine Art, and Objets D'art to be held at The Pittville Pump Room, Cheltenham, Glos. at 10.00am.

*A sale of fine quality Antiques, Fine Art & Objets D'art to include 'Modern Art and Design'*

*(Approx. 650+ fine and selected lots)*

Martin Lambert or Stephen Sheppard on 01451 821666 or 07989 357218

# **Hay, Straw and Fodder Sales**

**At Stow-On-The-Wold Rugby Club**

**Gloucestershire**

**Friday 23rd November 2012**

(Entries Close Friday 26th October 2012)

**Friday 4th January 2013**

(Entries close 6th December 2012)

**Friday 8th February 2013**

(Entries Close 16th January 2013)

**Friday 22nd March 2013**

(Entries Close 28th February 2013)

For further details see our website or contact Adrian Cannon on 01451 820913 or Email: [adrian.cannon@taylerandfletcher.co.uk](mailto:adrian.cannon@taylerandfletcher.co.uk)

See our website for latest News, Catalogues and Images etc.

**[taylerandfletcher.co.uk](http://taylerandfletcher.co.uk)**

You may also register to be sent regular 'email alerts' in order to receive the most up to date information and be notified when the catalogue and images are published on our Website

*Please note our new 2013 auction sale dates leaflet/Catalogue Subscription Form will soon be published and can easily be obtained free of charge at any of our Auction Sales or at any of our Cotswold Offices. This information, along with sale previews, sale results, regular updates and some lot images is also available on our website*



## Bourton-on-the-Water

**Guide Price: £975,000**

A substantial detached village house currently run as a Gold Award winning Bed and Breakfast set in a popular position on the edge of the village.

Bourton-on-the-Water Office



**Matthew Harvey**  
BSc MRICS  
Bourton-on-the-Water  
Residential Sales



**Edward Bagnall**  
MRICS FNAEA  
Stow-on-the-Wold  
Residential Sales



**Alex McEntyre**  
BA PGDip MRICS  
Chipping Norton  
Residential Sales



## Lower Slaughter

**Guide Price: £985,000**

An immaculately presented and substantial family house with private and beautifully tended gardens approaching half an acre, situated within the village and backing on to unspoilt countryside.

Stow-on-the-Wold Office



## Stow-on-the-Wold

**Guide Price: £1,250,000**

A beautifully appointed family house with annexe, mature gardens, paddock and delightful views over the adjoining countryside. In all just over five acres.

Stow-on-the-Wold Office



**Claire Mowat**  
HND Business  
Bourton-on-the-Water  
Residential  
Lettings



**Elizabeth Billot**  
MNAEA MARLA  
Stow-on-the-Wold  
Residential  
Lettings



**Caroline Smith**  
BSc Hons MRICS  
Chipping Norton  
Residential  
Lettings



## Enstone

**Guide Price: £375,000**

A charming detached period cottage with an attached studio area offering flexible living space.

Chipping Norton Office





Lot 415



Lot 72



Lot 566

# Taylor & Fletcher



Incorporating Martin Elliott Partnership



Lot 563



Lot 489